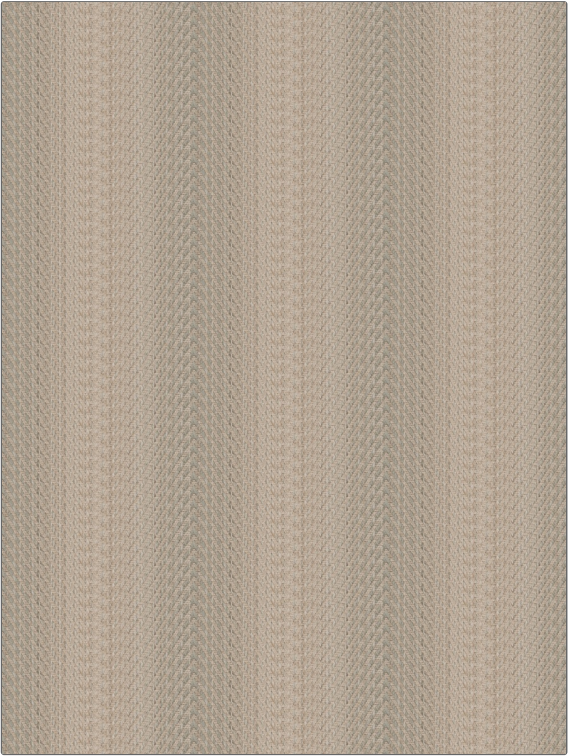


Fabric Product Details

PATTERN Parquetry Texture
COLOR Well Water

BRAND	APPLICATION
Vervain	Fabric
USES	CATEGORIES
Upholstery	Wovens
BOOK	COLORS
Vervain Fall 2015 Barry Dixon Fall 2015	Light Blue
DESIGN TYPES	SCALE
Flamestitch	Medium
RAILROADED	
Railroaded	



WIDTH	VERTICAL REPEAT	HORIZONTAL REPEAT	CONTENT
56.00 in (142.24 cm)	0.00 in (0.00 cm)	9.25 in (23.50 cm)	71% Rayon, 24% Flax, 5% Cotton
BACKING	FIRE CODES	DOUBLE RUBS	PRODUCT NUMBER
	UFAC Class I / NFPA 260	Exceeds 51,000 Double Rubs (Wyzenbeek Method)	5770802
COUNTRY	CLEANING CODES		
USA	S		

ADDITIONAL PRODUCT NOTES

Shown Railroaded, Exclusive Pattern