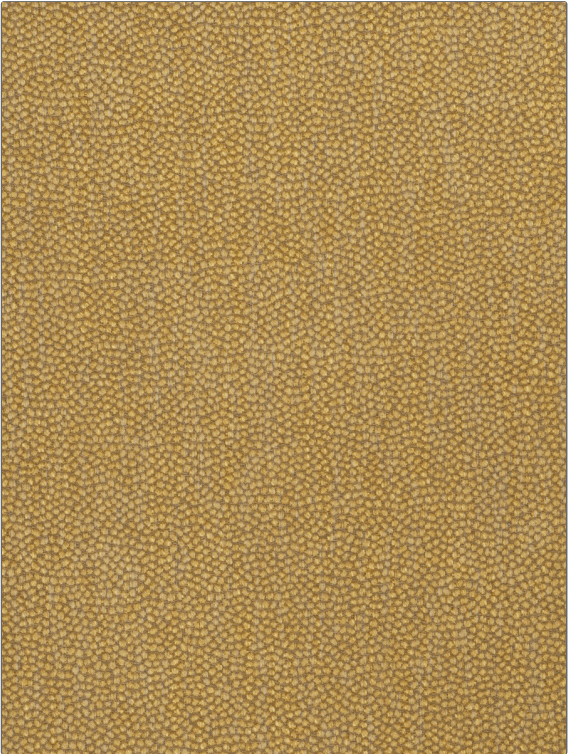


# Fabric Product Details

**PATTERN** Pea Gravel  
**COLOR** Walnut Hull

<b>BRAND</b>	<b>APPLICATION</b>
Vervain	Fabric
<b>USES</b>	<b>CATEGORIES</b>
Upholstery	Wovens, Solids / Small Scale Patterns
<b>BOOK</b>	<b>COLORS</b>
Barry Dixon Collection 2014 Barry Dixon Spring 2015	Gold
<b>DESIGN TYPES</b>	<b>RAILROADED</b>
Small Scale Woven, Solid, Texture Plain	Not Railroaded



<b>WIDTH</b>	<b>VERTICAL REPEAT</b>	<b>HORIZONTAL REPEAT</b>	<b>CONTENT</b>
55.00 in (139.70 cm)	0.00 in (0.00 cm)	0.00 in (0.00 cm)	43% Viscose, 35% Cotton, 12% Acrylic, 10% Linen
<b>BACKING</b>	<b>FIRE CODES</b>	<b>DOUBLE RUBS</b>	<b>PRODUCT NUMBER</b>
	UFAC Class I / NFPA 260	Exceeds 27,000 Double Rubs (Wyzenbeek Method)	5760405
<b>DATE BOOKED</b>	<b>COUNTRY</b>	<b>CLEANING CODES</b>	
08/2014	Italy	S	

**ADDITIONAL PRODUCT NOTES**

Exclusive Pattern