

Fabric Product Details

PATTERN **Payette Stripe**
COLOR **01**

BRAND

Vervain

APPLICATION

Fabric

CATEGORIES

Wovens, Crewels /
Embroideries

COLORS

Black, Off White / Ivory

DESIGN TYPES

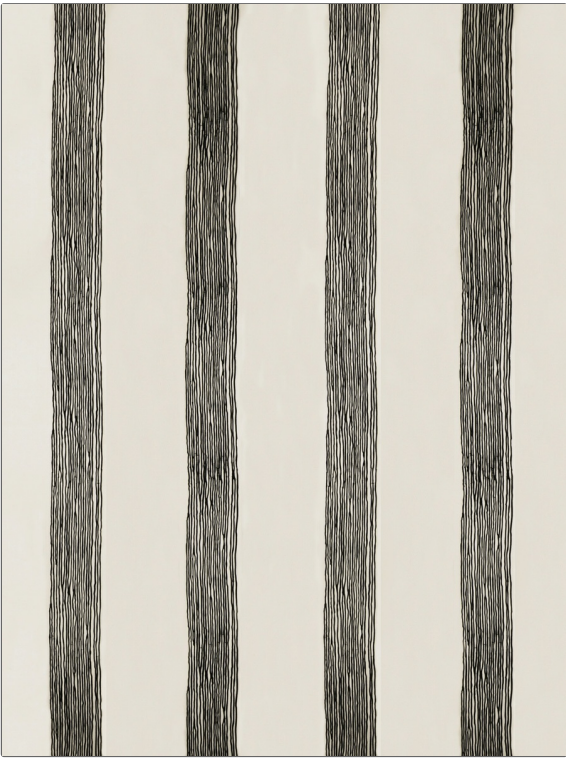
Embroidery, Stripes,
Contemporary / Modern

SCALE

Medium

RAILOADED

Not Railroaded



WIDTH

54.00 in (137.16 cm)

VERTICAL REPEAT

15.12 in (38.40 cm)

HORIZONTAL REPEAT

25.62 in (65.07 cm)

CONTENT

72% Polyester, 28%
Viscose

BACKING

PRODUCT NUMBER

4643601

COUNTRY

Italy

CLEANING CODES

S

ADDITIONAL PRODUCT NOTES

Exclusive Pattern