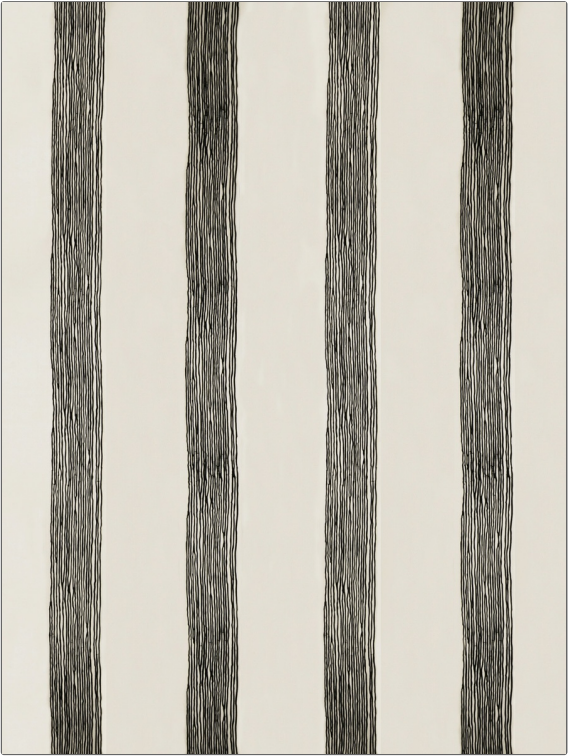


Fabric Product Details

PATTERN	Payette Stripe
COLOR	Zebra

BRAND	APPLICATION
Vervain	Fabric
CATEGORIES	COLORS
Wovens, Crewels / Embroideries	Black, Off White / Ivory
DESIGN TYPES	SCALE
Embroidery, Stripes, Contemporary / Modern	Medium
RAILOADED	
Not Railed	



WIDTH	VERTICAL REPEAT	HORIZONTAL REPEAT	CONTENT
54.00 in (137.16 cm)	15.12 in (38.40 cm)	25.62 in (65.07 cm)	72% Polyester, 28% Viscose
BACKING	PRODUCT NUMBER	COUNTRY	CLEANING CODES
	4643501	Italy	S

ADDITIONAL PRODUCT NOTES
Exclusive Pattern