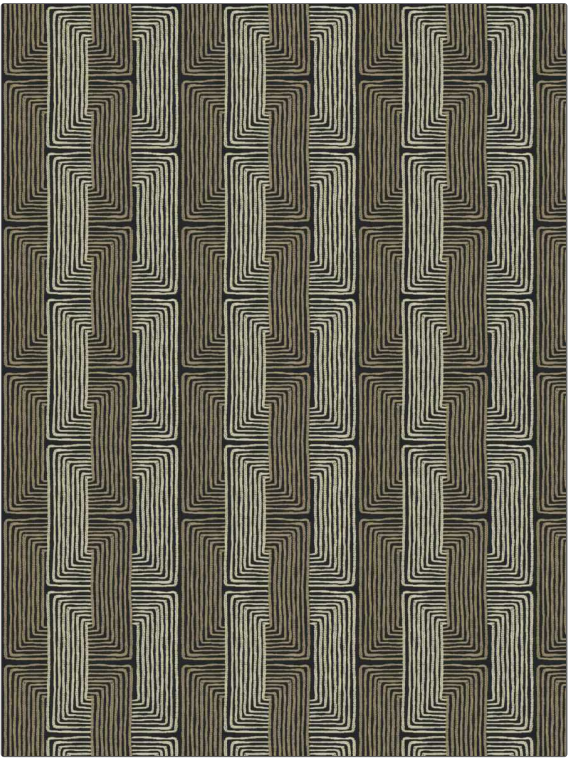


Fabric Product Details

PATTERN	Gauge		
COLOR	Angus		
BRAND	APPLICATION		
Vervain	Fabric		
USES	CATEGORIES		
Bedding, Drapery, Multipurpose	Crewels / Embroideries, Linen		
BOOK	COLORS		
Denise McGaha	Grey, Taupe / Tan, Linen		
DESIGN TYPES	SCALE		
Embroidery, Geometric	Medium		
RAILOADED			
Not Railroaded			



WIDTH	VERTICAL REPEAT	HORIZONTAL REPEAT	CONTENT
51.00 in (129.54 cm)	7.00 in (17.78 cm)	8.50 in (21.59 cm)	Embroidery: 100% Polyester, Base: 55% Linen, 45% Cotton
BACKING	FIRE CODES	DOUBLE RUBS	PRODUCT NUMBER
	UFAC Class I / NFPA 260	Exceeds 51,000 Double Rubs (Wyzenbeek Method)	1474305
DATE BOOKED	COUNTRY	CLEANING CODES	
01/2023	India	S	

ADDITIONAL PRODUCT NOTES
Ca Tb 117-2013, Exclusive Pattern, Embroidered Textiles Are Not, Guaranteed For Precise Color, Matching And Colorfastness., Color Placement Of Embroidery, May Vary. All Measurements, Quoted For Repeats Are, Approximate.