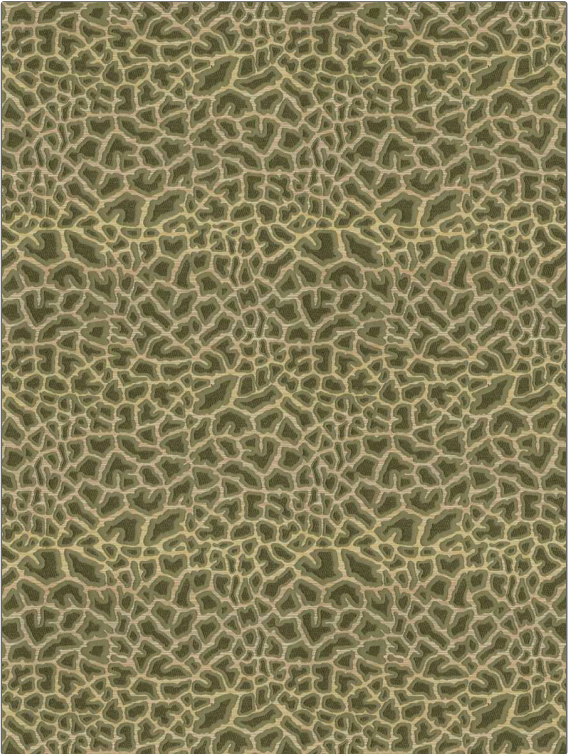


Fabric Product Details

PATTERN Wise Ranger
COLOR Meadow



BRAND	APPLICATION
Vervain	Fabric
USES	CATEGORIES
Upholstery	Wool, Wovens
BOOK	COLORS
Denise McGaha	Green, Light Green
DESIGN TYPES	SCALE
Animal Skins, Abstract	Medium
RAILROADED	
Not Railroaded	

WIDTH	VERTICAL REPEAT	HORIZONTAL REPEAT	CONTENT
53.00 in (134.62 cm)	15.00 in (38.10 cm)	13.25 in (33.66 cm)	43% Wool, 37% Cotton, 15% Nylon, 5% Acrylic
BACKING	FIRE CODES	DOUBLE RUBS	PRODUCT NUMBER
	UFAC Class I / NFPA 260	Exceeds 51,000 Double Rubs (Wyzenbeek Method)	1464301
DATE BOOKED	COUNTRY	CLEANING CODES	
01/2023	USA	S	

ADDITIONAL PRODUCT NOTES
 Ca Tb 117-2013, Exclusive Pattern