

Fabric Product Details

PATTERN **04596**
COLOR **Birch**

BRAND

Trend

APPLICATION

Fabric

USES

**Bedding, Drapery,
Multipurpose**

CATEGORIES

Wovens

BOOK

**Lifestyles By Color IX (4
Books) Sand / Storm**

COLORS

Linen

DESIGN TYPES

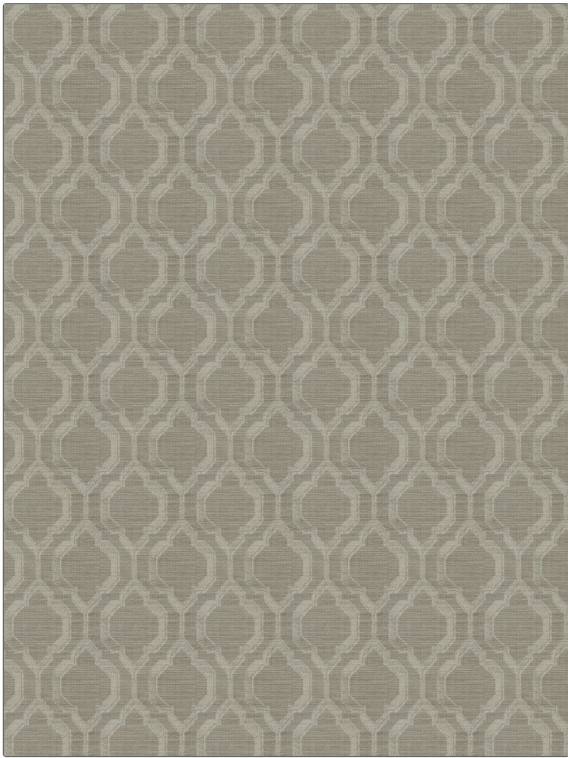
Lattice / Fretwork, Ogee

SCALE

Medium

RAILROADED

Not Railroaded



WIDTH

55.00 in (139.70 cm)

VERTICAL REPEAT

5.75 in (14.60 cm)

HORIZONTAL REPEAT

4.62 in (11.73 cm)

CONTENT

**54% Polyester, 42% Cotton,
4% Linen**

BACKING

FIRE CODES

UFAC Class I / NFPA 260

DOUBLE RUBS

**Exceeds 30,000 Double
Rubs (Wyzenbeek Method)**

PRODUCT NUMBER

9809602

DATE BOOKED

02/2019

COUNTRY

India

CLEANING CODES

S

ADDITIONAL PRODUCT NOTES

Ca Tb 117-2013