

Fabric Product Details

PATTERN **04557**  
COLOR **Teal Haze**

BRAND

**Trend**

APPLICATION

**Fabric**

USES

**Bedding, Drapery,  
Multipurpose**

CATEGORIES

**Prints**

BOOK

**Lifestyles By Color IX (4  
Books) Pacific / Royal**

COLORS

**Grey, Aqua / Teal**

DESIGN TYPES

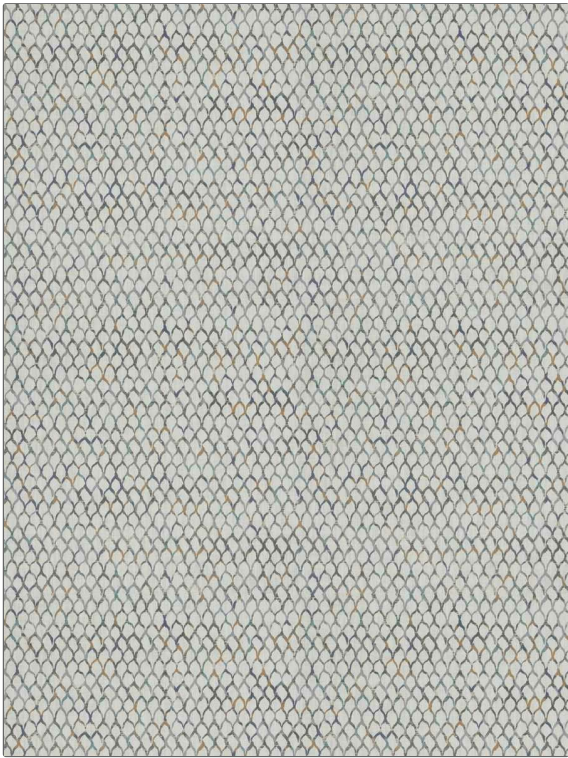
**Print Pattern,  
Contemporary / Modern,  
Ogee**

SCALE

**Small**

RAILROADED

**Not Railroaded**



WIDTH

**56.00 in (142.24 cm)**

VERTICAL REPEAT

**27.87 in (70.79 cm)**

HORIZONTAL REPEAT

**28.25 in (71.76 cm)**

CONTENT

**100% Polyester**

BACKING

FIRE CODES

**UFAC Class I / NFPA 260,  
Passes "NFPA 701" 2010**

DOUBLE RUBS

**Exceeds 18,000 Double  
Rubs (Wyzenbeek Method)**

PRODUCT NUMBER

**9768504**

DATE BOOKED

**02/2019**

COUNTRY

**Turkey**

CLEANING CODES

**S**

ADDITIONAL PRODUCT NOTES

**Ca Tb 117-2013, Exclusive Pattern**