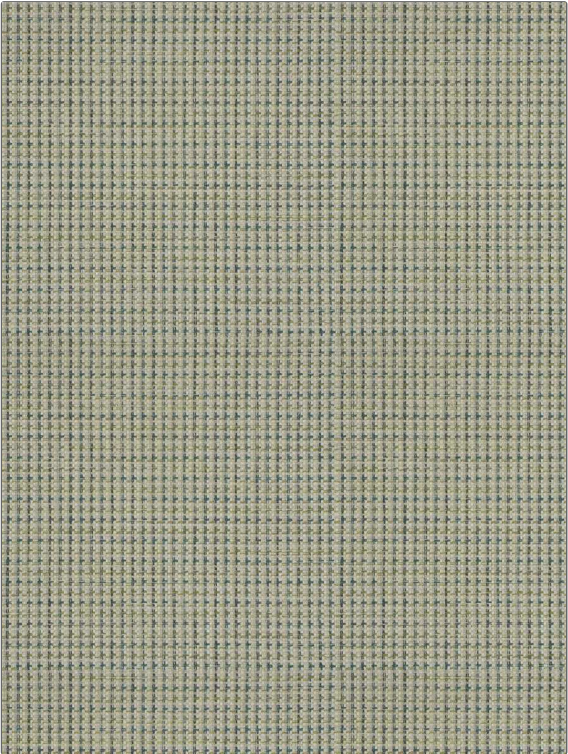


Fabric Product Details

PATTERN 05278
COLOR Sweet Pea

BRAND	APPLICATION
Trend	Fabric
USES	CATEGORIES
Bedding	Wovens
BOOK	COLORS
Chromatics Vol. II (4 Books) Blue / Moss	Aqua / Teal, Light Green
DESIGN TYPES	SCALE
Check / Plaid	Small
RAILROADED	
Not Railroaded	



WIDTH	VERTICAL REPEAT	HORIZONTAL REPEAT	CONTENT
55.00 in (139.70 cm)	0.75 in (1.90 cm)	0.75 in (1.90 cm)	76% Polyester, 12% Cotton, 6% Viscose, 6% Linen
BACKING	PRODUCT NUMBER	DATE BOOKED	COUNTRY
	9591903	04/2023	India
CLEANING CODES			
S			

ADDITIONAL PRODUCT NOTES

Ca Tb 117-2013