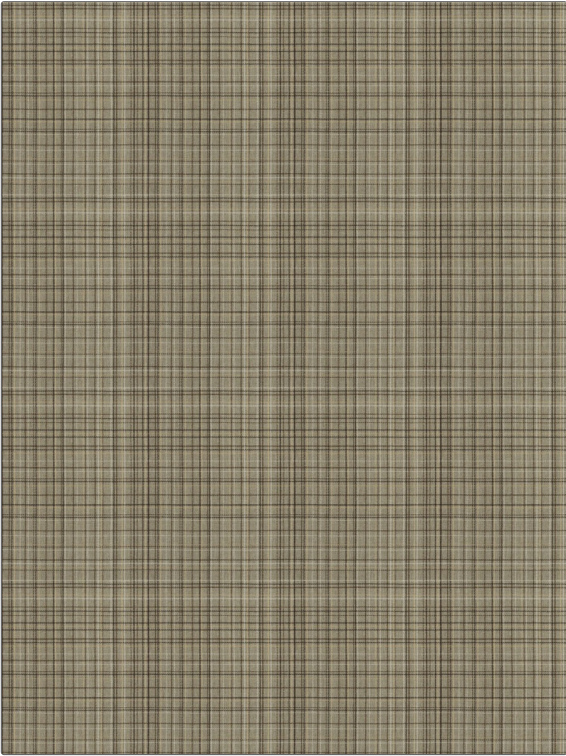


Fabric Product Details

PATTERN 04317
COLOR Latte

| | |
|--------------------|---------------------|
| BRAND | APPLICATION |
| Trend | Fabric |
| USES | CATEGORIES |
| Upholstery | Wovens, Chenille |
| COLORS | DESIGN TYPES |
| Brown, Taupe / Tan | Check / Plaid |
| SCALE | RAILROADED |
| Small | Not Railroaded |



| | | | |
|----------------------|-------------------------|---|-----------------------|
| WIDTH | VERTICAL REPEAT | HORIZONTAL REPEAT | CONTENT |
| 54.00 in (137.16 cm) | 14.00 in (35.56 cm) | 18.50 in (46.99 cm) | 100% Polyester |
| BACKING | FIRE CODES | DOUBLE RUBS | PRODUCT NUMBER |
| | UFAC Class I / NFPA 260 | Exceeds 30,000 Double Rubs (Wyzenbeek Method) | 8888501 |
| COUNTRY | CLEANING CODES | | |
| China | WS | | |

ADDITIONAL PRODUCT NOTES

Ca Tb 117-2013