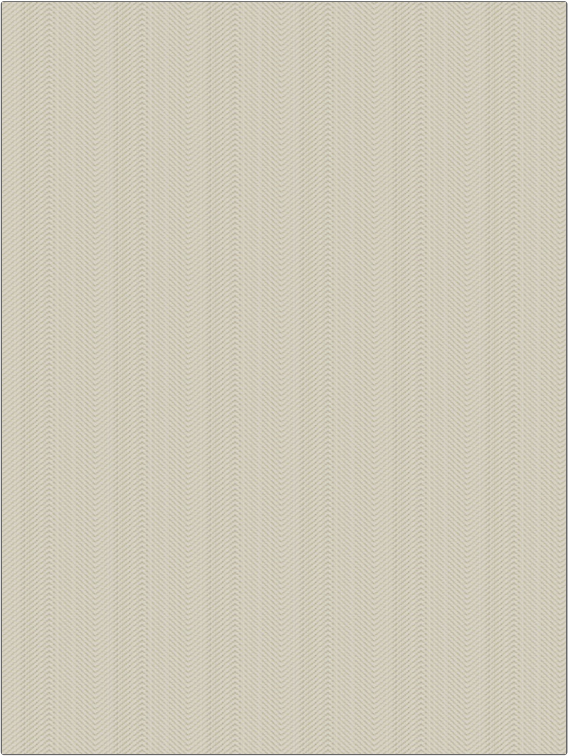


Fabric Product Details

PATTERN	04365
COLOR	Beige
BRAND	APPLICATION
Trend	Fabric
USES	CATEGORIES
Upholstery	Wovens, Chenille
BOOK	COLORS
Wovens By Color Vol. III Camel-Tan	Beige, Off White / Ivory
DESIGN TYPES	SCALE
Herringbone, Small Scale Woven, Chevron	Small
RAILOADED	
Railroaded	



WIDTH	VERTICAL REPEAT	HORIZONTAL REPEAT	CONTENT
54.00 in (137.16 cm)	0.25 in (0.64 cm)	4.45 in (11.30 cm)	100% Polyester
BACKING	FIRE CODES	DOUBLE RUBS	PRODUCT NUMBER
100% Latex Backing	UFAC Class I / NFPA 260	Exceeds 30,000 Double Rubs (Wyzenbeek Method)	8880001
DATE BOOKED	COUNTRY	CLEANING CODES	
02/2018	China	WS	

ADDITIONAL PRODUCT NOTES
Ca Tb 117-2013, 100% Latex Backing, Shown Railroaded