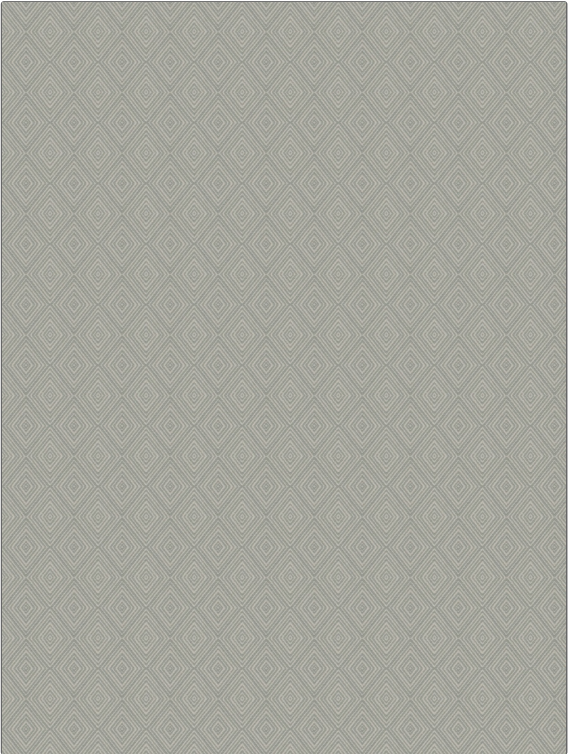


# Fabric Product Details

**PATTERN** 04237  
**COLOR** Aqua



<b>BRAND</b>	<b>APPLICATION</b>
<b>Trend</b>	<b>Fabric</b>
<b>USES</b>	<b>CATEGORIES</b>
<b>Bedding, Drapery, Multipurpose</b>	<b>Wovens</b>
<b>BOOK</b>	<b>COLORS</b>
<b>Vern Yip Vol. II Aqua / Citrine</b>	<b>Aqua / Teal</b>
<b>DESIGN TYPES</b>	<b>SCALE</b>
<b>Diamond</b>	<b>Small</b>
<b>RAILROADED</b>	
<b>Not Railroaded</b>	

<b>WIDTH</b>	<b>VERTICAL REPEAT</b>	<b>HORIZONTAL REPEAT</b>	<b>CONTENT</b>
<b>54.00 in (137.16 cm)</b>	<b>2.25 in (5.72 cm)</b>	<b>1.75 in (4.44 cm)</b>	<b>100% Cotton</b>
<b>BACKING</b>	<b>FIRE CODES</b>	<b>DOUBLE RUBS</b>	<b>PRODUCT NUMBER</b>
	<b>UFAC Class I / NFPA 260</b>	<b>Exceeds 25,000 Double Rubs (Wyzenbeek Method)</b>	<b>8619402</b>
<b>DATE BOOKED</b>	<b>COUNTRY</b>	<b>CLEANING CODES</b>	
<b>07/2017</b>	<b>China</b>	<b>S</b>	

**ADDITIONAL PRODUCT NOTES**  
**Ca Tb 117-2013, Exclusive Pattern**