

# Fabric Product Details

**PATTERN** 01355  
**COLOR** Beechnut

**BRAND**

**Trend**

**APPLICATION**

**Fabric**

**USES**

**Drapery**

**CATEGORIES**

**FR-One, NFPA 701 FR,  
Taffeta, Wovens, Eco /  
Environment Plus**

**COLORS**

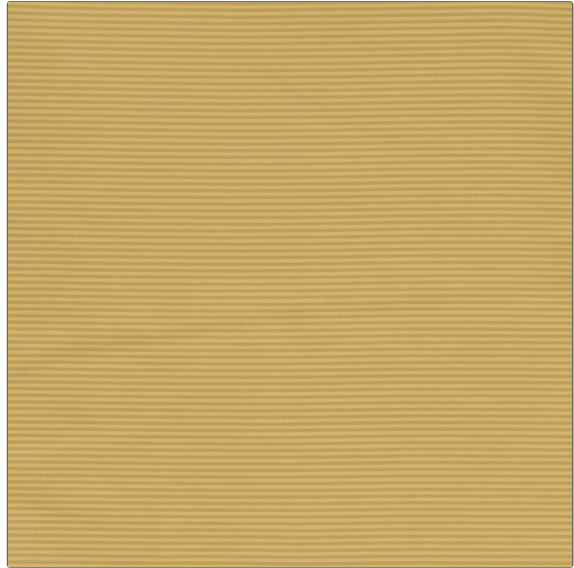
**Light Green**

**DESIGN TYPES**

**Texture Plain,  
Contemporary / Modern**

**RAILROADED**

**Not Railroaded**



**WIDTH**

**58.00 in (147.32 cm)**

**VERTICAL REPEAT**

**0.00 in (0.00 cm)**

**HORIZONTAL REPEAT**

**0.00 in (0.00 cm)**

**CONTENT**

**100% Polyester Inherent FR**

**BACKING**

**FIRE CODES**

**Passes ASTM-E84, Passes  
"NFPA 701" 2004, Passes  
MVS 302, Boston Fire Test  
Bfd, Imo Ftpc Part 7  
(Drapery)**

**DOUBLE RUBS**

**Exceeds 9,000 Double Rubs  
(Wyzenbeek Method)**

**PRODUCT NUMBER**

**0742834**

**COUNTRY**

**Turkey**

**ADDITIONAL PRODUCT NOTES**

**Oeko Tex Standard 100, Exclusive Pattern, Passes Ny / Nj Pa, Passes Faa Part 25.853**