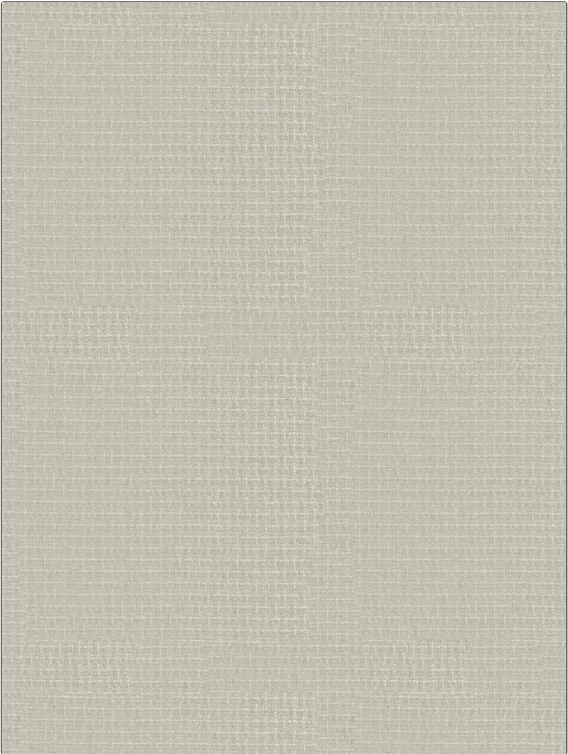


# Fabric Product Details

**PATTERN** 05085  
**COLOR** 01

<b>BRAND</b>	<b>APPLICATION</b>
<b>Trend</b>	<b>Fabric</b>
<b>USES</b>	<b>CATEGORIES</b>
<b>Upholstery</b>	<b>Solids / Small Scale Patterns, Chenille</b>
<b>COLORS</b>	<b>DESIGN TYPES</b>
<b>Grey, Linen</b>	<b>Texture Plain</b>
<b>RAILROADED</b>	
<b>Not Railroaded</b>	



<b>WIDTH</b>	<b>VERTICAL REPEAT</b>	<b>HORIZONTAL REPEAT</b>	<b>CONTENT</b>
55.00 in (139.70 cm)	0.50 in (1.27 cm)	0.50 in (1.27 cm)	100% Polyester
<b>BACKING</b>	<b>FIRE CODES</b>	<b>DOUBLE RUBS</b>	<b>PRODUCT NUMBER</b>
	UFAC Class I / NFPA 260	Exceeds 45,000 Double Rubs (Wyzenbeek Method)	6085201
<b>COUNTRY</b>	<b>CLEANING CODES</b>		
China	S		

**ADDITIONAL PRODUCT NOTES**

Ca Tb 117-2013