

# Fabric Product Details

**PATTERN** 03505  
**COLOR** 02

**BRAND**

**Trend**

**APPLICATION**

**Fabric**

**USES**

**Bedding, Drapery,  
Multipurpose, Upholstery**

**CATEGORIES**

**Wovens, Chenille**

**COLORS**

**Aqua / Teal**

**DESIGN TYPES**

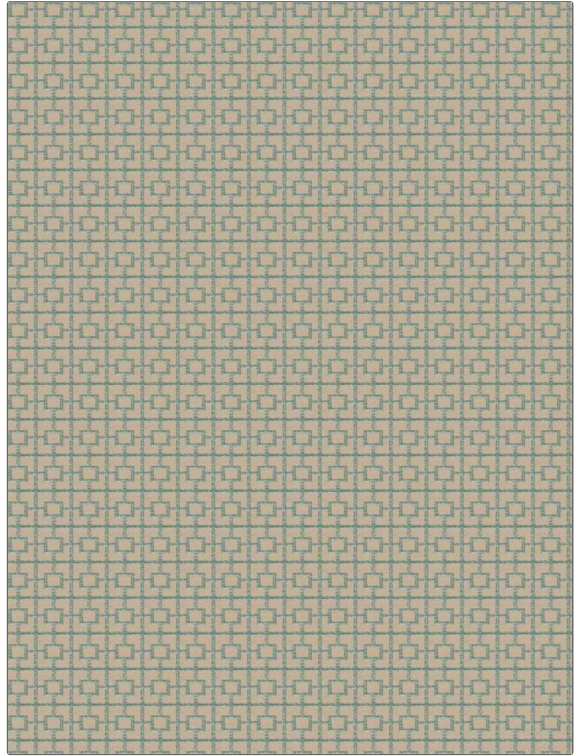
**Geometric, Contemporary /  
Modern**

**SCALE**

**Small**

**RAILROADED**

**Not Railroaded**



**WIDTH**

**54.00 in (137.16 cm)**

**VERTICAL REPEAT**

**1.62 in (4.11 cm)**

**HORIZONTAL REPEAT**

**1.75 in (4.44 cm)**

**CONTENT**

**49% Rayon, 31% Polyester,  
20% Cotton**

**BACKING**

**FIRE CODES**

**UFAC Class I, Passes NFPA  
260**

**DOUBLE RUBS**

**Exceeds 21,000 Double  
Rubs (Wyzenbeek Method)**

**PRODUCT NUMBER**

**5446102**

**COUNTRY**

**China**

**CLEANING CODES**

**S**

**ADDITIONAL PRODUCT NOTES**

**Exclusive Pattern**