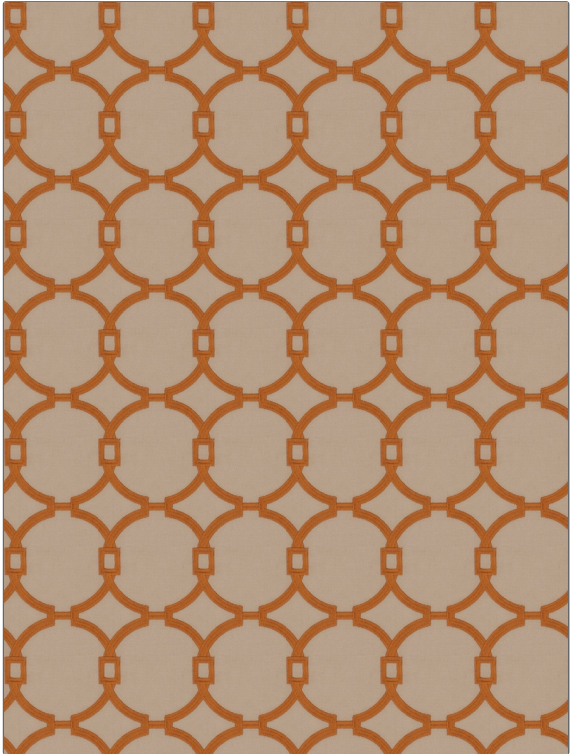


# Fabric Product Details

**PATTERN** 03496  
**COLOR** 01

<b>BRAND</b>	<b>APPLICATION</b>
<b>Trend</b>	<b>Fabric</b>
<b>USES</b>	<b>CATEGORIES</b>
<b>Bedding, Drapery</b>	<b>Crewels / Embroideries</b>
<b>COLORS</b>	<b>DESIGN TYPES</b>
<b>Orange / Spice</b>	<b>Embroidery, Lattice / Fretwork, Dots / Circles</b>
<b>SCALE</b>	<b>RAILROADED</b>
<b>Medium</b>	<b>Not Railroaded</b>



<b>WIDTH</b>	<b>VERTICAL REPEAT</b>	<b>HORIZONTAL REPEAT</b>	<b>CONTENT</b>
<b>52.00 in (132.08 cm)</b>	<b>5.25 in (13.34 cm)</b>	<b>4.50 in (11.43 cm)</b>	<b>Base: 100% Cotton, Embroidery: 100% Polyester</b>
<b>BACKING</b>	<b>PRODUCT NUMBER</b>	<b>COUNTRY</b>	<b>CLEANING CODES</b>
	<b>5444501</b>	<b>China</b>	<b>S</b>

**ADDITIONAL PRODUCT NOTES**

Ca Tb 117-2013, Exclusive Pattern, Embroidered Textiles Are Not, Guaranteed For Precise Color, Matching And Colorfastness., Color Placement Of Embroidery, May Vary. All Measurements, Quoted For Repeats Are, Approximate.