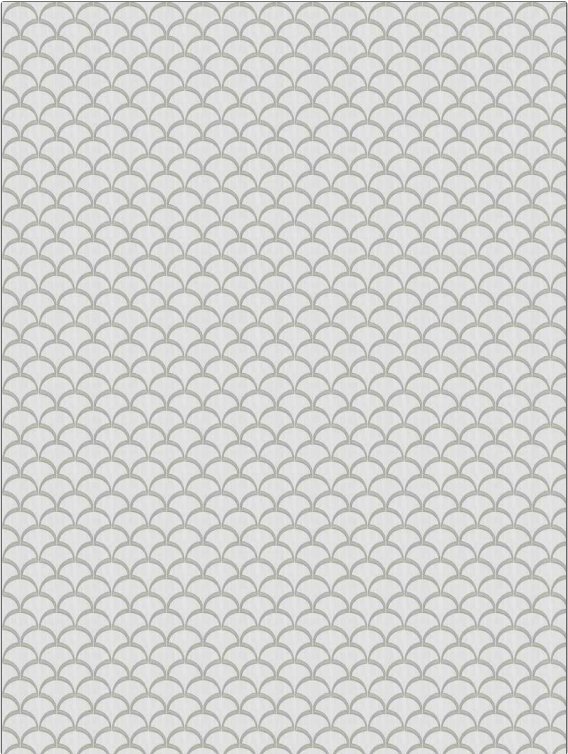


Fabric Product Details

PATTERN 04975
COLOR Linen

BRAND	APPLICATION
Trend	Fabric
CATEGORIES	BOOK
Crewels / Embroideries	Vern Yip Vol. III Moonstone / Dune
COLORS	DESIGN TYPES
Linen, White	Embroidery, Ogee
SCALE	RAILROADED
Small	Not Railroaded



WIDTH	VERTICAL REPEAT	HORIZONTAL REPEAT	CONTENT
54.00 in (137.16 cm)	1.50 in (3.81 cm)	1.75 in (4.44 cm)	Embroidery: 100% Viscose, Base: 100% Polyester
BACKING	PRODUCT NUMBER	DATE BOOKED	COUNTRY
	4414202	10/2021	India
CLEANING CODES			
S			

ADDITIONAL PRODUCT NOTES

Exclusive Pattern, Embroidered Textiles Are Not, Guaranteed For Precise Color, Matching And Colorfastness., Color Placement Of Embroidery, May Vary. All Measurements, Quoted For Repeats Are, Approximate.