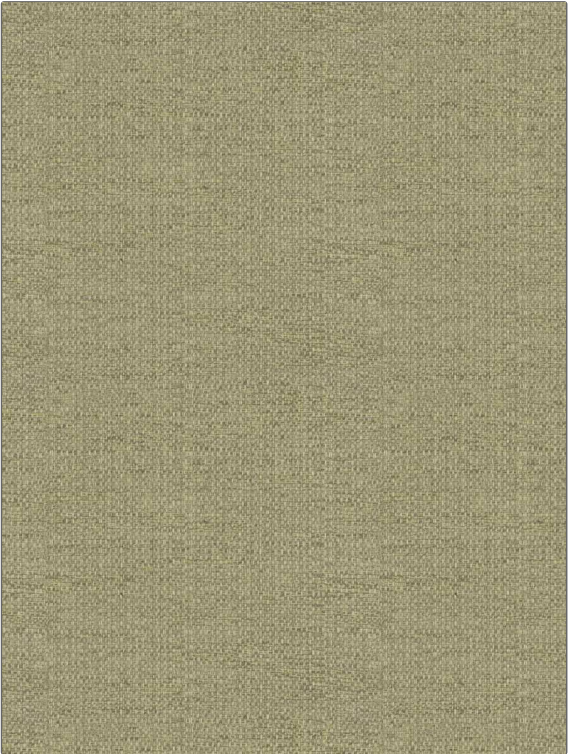


# Fabric Product Details

**PATTERN** 05411  
**COLOR** Raffia

<b>BRAND</b>	<b>APPLICATION</b>
Trend	Fabric
<b>USES</b>	<b>CATEGORIES</b>
Upholstery	Wovens
<b>BOOK</b>	<b>COLORS</b>
Lifestyles By Color Vol. XI(3 Books) Linen / Harvest	Taupe / Tan
<b>DESIGN TYPES</b>	<b>RAILROADED</b>
Texture Plain	Not Railroaded



<b>WIDTH</b>	<b>VERTICAL REPEAT</b>	<b>HORIZONTAL REPEAT</b>	<b>CONTENT</b>
54.00 in (137.16 cm)	0.00 in (0.00 cm)	0.00 in (0.00 cm)	100% Polyester
<b>BACKING</b>	<b>FIRE CODES</b>	<b>DOUBLE RUBS</b>	<b>PRODUCT NUMBER</b>
Light Acrylic Backing	UFAC Class I / NFPA 260	Exceeds 60,000 Double Rubs (Wyzenbeek Method)	1457701
<b>DATE BOOKED</b>	<b>COUNTRY</b>	<b>CLEANING CODES</b>	
01/2024	China	S	

**ADDITIONAL PRODUCT NOTES**

Ca Tb 117-2013, Light Acrylic Backing