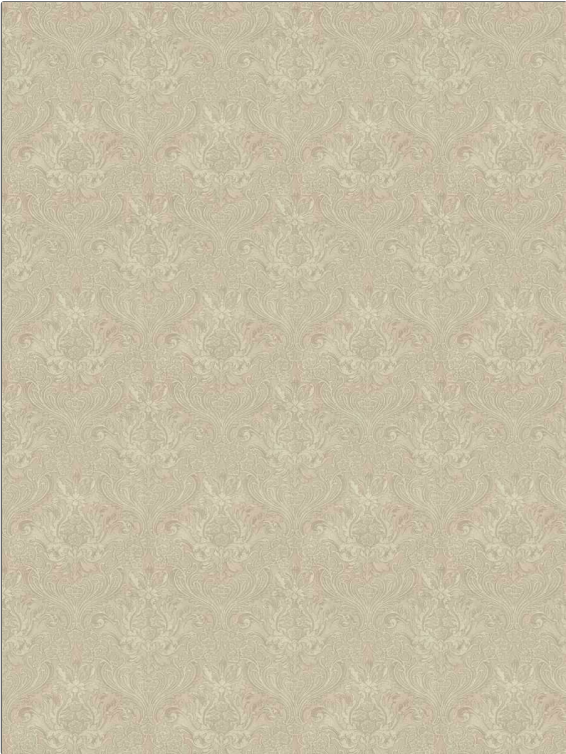


# Fabric Product Details

**PATTERN** 05412  
**COLOR** 02

<b>BRAND</b>	<b>APPLICATION</b>
<b>Trend</b>	<b>Fabric</b>
<b>USES</b>	<b>CATEGORIES</b>
<b>Bedding, Drapery, Multipurpose, Upholstery</b>	<b>Wovens, Chenille</b>
<b>COLORS</b>	<b>DESIGN TYPES</b>
<b>Pink</b>	<b>Damask</b>
<b>SCALE</b>	<b>RAILROADED</b>
<b>Large</b>	<b>Not Railroaded</b>



<b>WIDTH</b>	<b>VERTICAL REPEAT</b>	<b>HORIZONTAL REPEAT</b>	<b>CONTENT</b>
<b>54.00 in (137.16 cm)</b>	<b>19.00 in (48.26 cm)</b>	<b>14.00 in (35.56 cm)</b>	<b>67% Viscose, 33% Polyester</b>
<b>BACKING</b>	<b>FIRE CODES</b>	<b>DOUBLE RUBS</b>	<b>PRODUCT NUMBER</b>
	<b>UFAC Class I / NFPA 260</b>	<b>Exceeds 30,000 Double Rubs (Wyzenbeek Method)</b>	<b>1455702</b>
<b>COUNTRY</b>	<b>CLEANING CODES</b>		
<b>South Korea</b>	<b>S</b>		

**ADDITIONAL PRODUCT NOTES**

**Ca Tb 117-2013**