

Fabric Product Details

PATTERN **05358**  
COLOR **Linen**

BRAND

**Trend**

APPLICATION

**Fabric**

USES

**Upholstery**

CATEGORIES

**Wovens**

BOOK

**Wovens By Color Vol. V (3 Books) Wheat / Shadow**

COLORS

**Taupe / Tan, Linen**

DESIGN TYPES

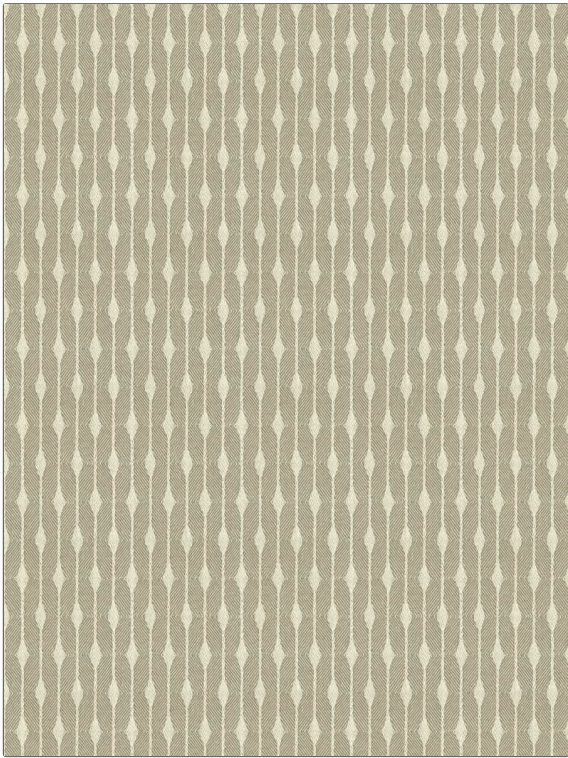
**Herringbone, Diamond**

SCALE

**Small**

RAILROADED

**Not Railroaded**



WIDTH

**54.00 in (137.16 cm)**

VERTICAL REPEAT

**3.62 in (9.19 cm)**

HORIZONTAL REPEAT

**1.75 in (4.44 cm)**

CONTENT

**60% Post Industrial Cotton,  
40% Post Industrial,  
Polyester**

BACKING

**100% Latex Backing**

FIRE CODES

**Does Not Contain FR  
Chemicals, UFAC Class I /  
NFPA 260**

DOUBLE RUBS

**Exceeds 12,000 Double  
Rubs (Wyzenbeek Method)**

PRODUCT NUMBER

**1333901**

DATE BOOKED

**02/2023**

COUNTRY

**USA**

CLEANING CODES

**S**

ADDITIONAL PRODUCT NOTES

**Ca Tb 117-2013, 100% Latex Backing**