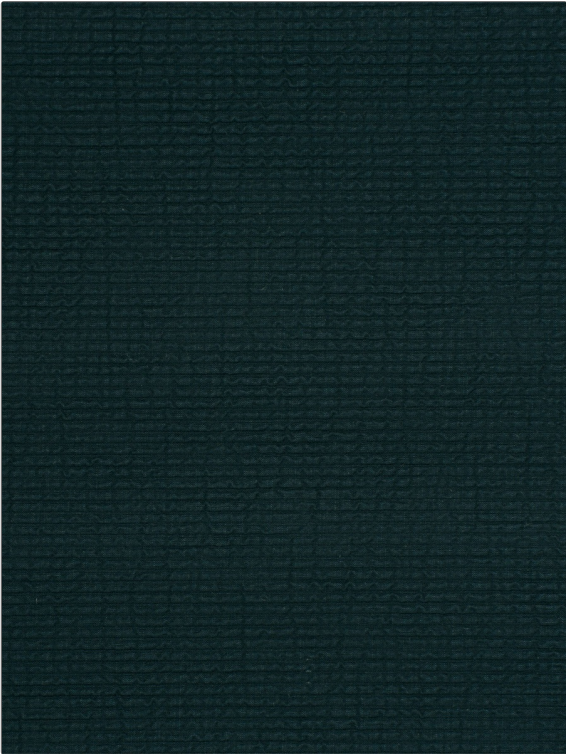


# Fabric Product Details

<b>PATTERN</b>	<b>Lockheart</b>
<b>COLOR</b>	<b>Sail</b>



<b>BRAND</b>	<b>APPLICATION</b>
<b>Stroheim</b>	<b>Fabric</b>
<b>USES</b>	<b>CATEGORIES</b>
<b>Bedding, Upholstery</b>	<b>Wovens, Solids / Small Scale Patterns</b>
<b>BOOK</b>	<b>COLORS</b>
<b>Texturefield</b>	<b>Aqua / Teal</b>
<b>DESIGN TYPES</b>	<b>RAILROADED</b>
<b>Small Scale Woven, Solid, Texture Plain</b>	<b>Not Railroaded</b>

<b>WIDTH</b>	<b>VERTICAL REPEAT</b>	<b>HORIZONTAL REPEAT</b>	<b>CONTENT</b>
<b>57.00 in (144.78 cm)</b>	<b>0.00 in (0.00 cm)</b>	<b>0.00 in (0.00 cm)</b>	<b>49% Viscose, 21% Linen, 17% Acrylic, 13% Polyester</b>
<b>BACKING</b>	<b>FIRE CODES</b>	<b>DOUBLE RUBS</b>	<b>PRODUCT NUMBER</b>
	<b>UFAC Class I / NFPA 260</b>	<b>Exceeds 51,000 Double Rubs (Wyzenbeek Method)</b>	<b>8980205</b>
<b>DATE BOOKED</b>	<b>COUNTRY</b>	<b>CLEANING CODES</b>	
<b>09/2017</b>	<b>India</b>	<b>S</b>	

<b>ADDITIONAL PRODUCT NOTES</b>
<b>Passes 30,000 Martindale Tst, Ca Tb 117-2013, Exclusive Pattern</b>