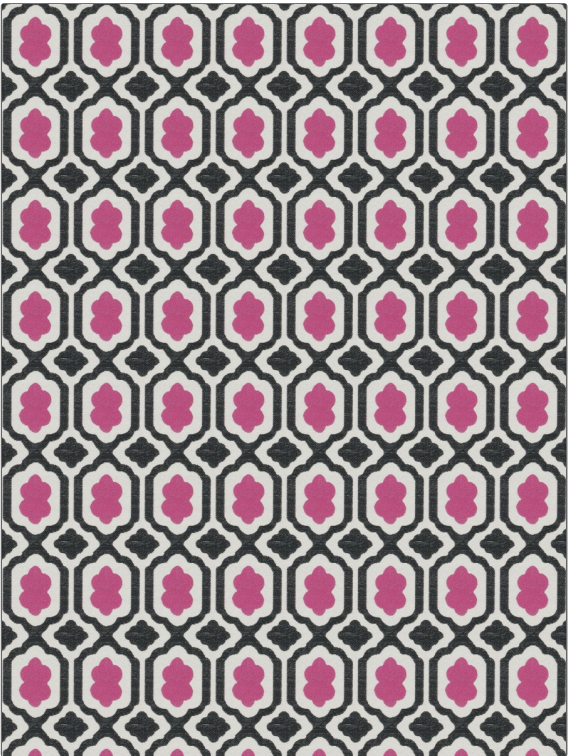


Fabric Product Details

PATTERN	Aventine
COLOR	Pink

BRAND	APPLICATION
Stroheim	Fabric
USES	CATEGORIES
Upholstery	Wovens
COLORS	DESIGN TYPES
Grey, Pink	Small Scale Woven, Medallion
SCALE	RAILOADED
Medium	Not Railed



WIDTH	FINISH	VERTICAL REPEAT	HORIZONTAL REPEAT
53.00 in (134.62 cm)	Soil & Stain Repellent Finish	4.25 in (10.80 cm)	3.40 in (8.64 cm)
CONTENT	BACKING	FIRE CODES	DOUBLE RUBS
53% Rayon, 27% Cotton, 20% Polyester		UFAC Class I / NFPA 260	Exceeds 54,000 Double Rubs (Wyzenbeek Method)
PRODUCT NUMBER	COUNTRY	CLEANING CODES	
8959109	USA	W	

ADDITIONAL PRODUCT NOTES
Soil & Stain Repellent Finish, Pfas-Free, Anti-Bacterial / Anti-Microbial, Exclusive Pattern