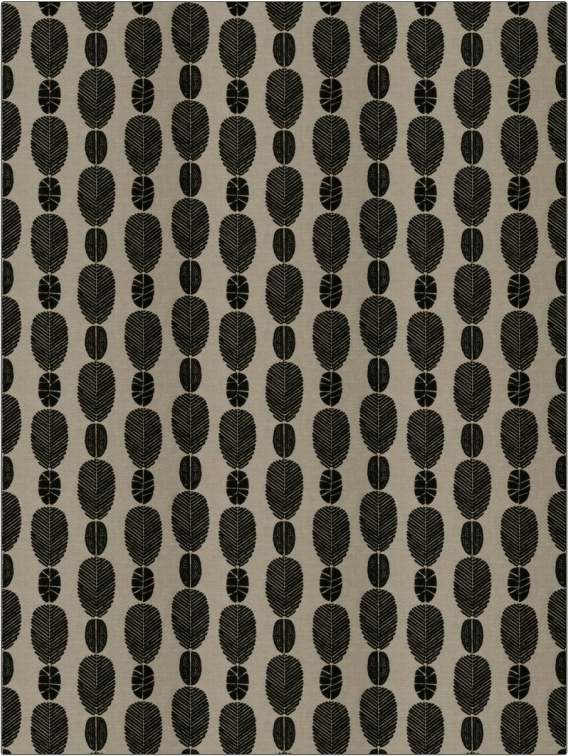


Fabric Product Details

PATTERN	Sani Pass		
COLOR	Antelope		
BRAND	Stroheim		
APPLICATION	Fabric		
USES	Bedding, Drapery, Multipurpose		
CATEGORIES	Crewels / Embroideries		
BOOK	Black And White		
COLORS	Black, Linen		
DESIGN TYPES	Embroidery, Global / Ethnic, Leaves		
SCALE	Medium		
RAILROADED	Not Railed		



WIDTH	VERTICAL REPEAT	HORIZONTAL REPEAT	CONTENT
53.00 in (134.62 cm)	9.20 in (23.37 cm)	18.00 in (45.72 cm)	Embroidery: 100% Cotton, Base: 100% Linen
BACKING	PRODUCT NUMBER	DATE BOOKED	COUNTRY
	8398202	02/2017	India
CLEANING CODES			
S			

ADDITIONAL PRODUCT NOTES
Ca Tb 117-2013, Exclusive Pattern, Embroidered Textiles Are Not, Guaranteed For Precise Color, Matching And Colorfastness., Color Placement Of Embroidery, May Vary. All Measurements, Quoted For Repeats Are, Approximate.