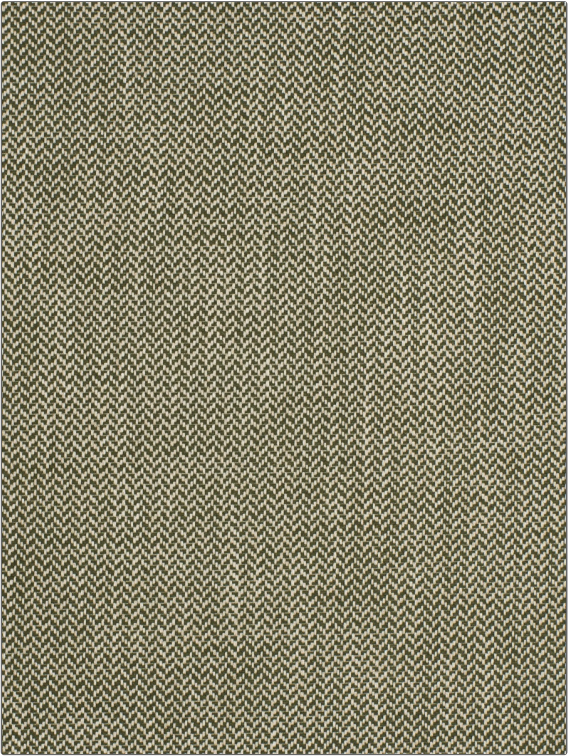


# Fabric Product Details

**PATTERN** Belo Herringbone  
**COLOR** 02

<b>BRAND</b> Stroheim	<b>APPLICATION</b> Fabric
<b>USES</b> Bedding, Drapery	<b>CATEGORIES</b> Wovens
<b>COLORS</b> Green	<b>DESIGN TYPES</b> Herringbone
<b>SCALE</b> Small	<b>RAILROADED</b> Not Railroaded



<b>WIDTH</b> 55.00 in (139.70 cm)	<b>VERTICAL REPEAT</b> 0.25 in (0.64 cm)	<b>HORIZONTAL REPEAT</b> 0.40 in (1.02 cm)	<b>CONTENT</b> 58% Viscose, 25% Linen, 14% Cotton, 3% Polyester
<b>BACKING</b>	<b>FIRE CODES</b> UFAC Class I / NFPA 260	<b>DOUBLE RUBS</b> Exceeds 42,000 Double Rubs (Wyzenbeek Method)	<b>PRODUCT NUMBER</b> 8344202
<b>COUNTRY</b> India	<b>CLEANING CODES</b> S		

**ADDITIONAL PRODUCT NOTES**  
 Passes 20,000 Martindale Tst, Exclusive Pattern