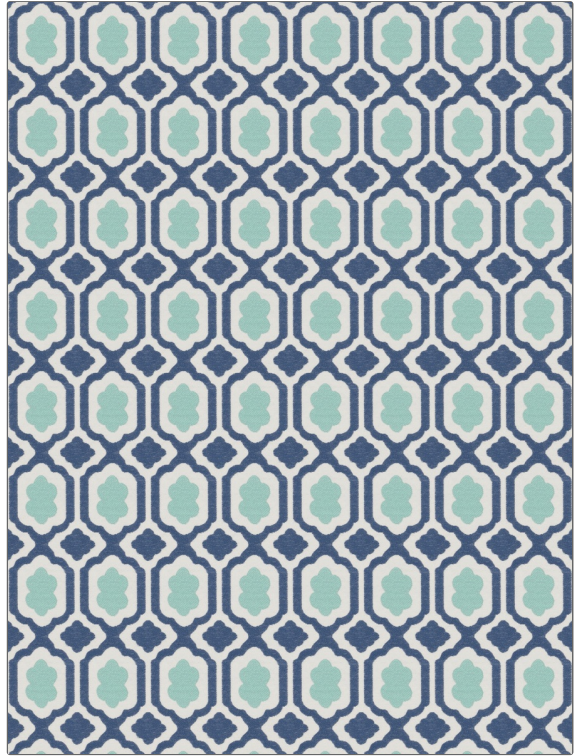


# Fabric Product Details

**PATTERN** De Wolf  
**COLOR** 06

|                   |                              |
|-------------------|------------------------------|
| <b>BRAND</b>      | <b>APPLICATION</b>           |
| Stroheim          | Fabric                       |
| <b>USES</b>       | <b>CATEGORIES</b>            |
| Upholstery        | Wovens                       |
| <b>COLORS</b>     | <b>DESIGN TYPES</b>          |
| Blue, Aqua / Teal | Small Scale Woven, Medallion |
| <b>SCALE</b>      | <b>RAILROADED</b>            |
| Medium            | Not Railroaded               |



|                                      |                               |                         |   |
|--------------------------------------|-------------------------------|-------------------------|---|
| <b>WIDTH</b>                         | <b>FINISH</b>                 | <b>VERTICAL REPEAT</b>  | <b>HORIZONTAL REPEAT</b>                      |
| 53.00 in (134.62 cm)                 | Soil & Stain Repellent Finish | 4.25 in (10.80 cm)      | 3.40 in (8.64 cm)                             |
| <b>CONTENT</b>                       | <b>BACKING</b>                | <b>FIRE CODES</b>       | <b>DOUBLE RUBS</b>                            |
| 53% Rayon, 27% Cotton, 20% Polyester |                               | UFAC Class I / NFPA 260 | Exceeds 54,000 Double Rubs (Wyzenbeek Method) |
| <b>PRODUCT NUMBER</b>                | <b>COUNTRY</b>                | <b>CLEANING CODES</b>   |   |
| 8341606                              | USA                           | W                       |   |

**ADDITIONAL PRODUCT NOTES**

Soil & Stain Repellent Finish, Pfas-Free, Anti-Bacterial / Anti-Microbial, Exclusive Pattern