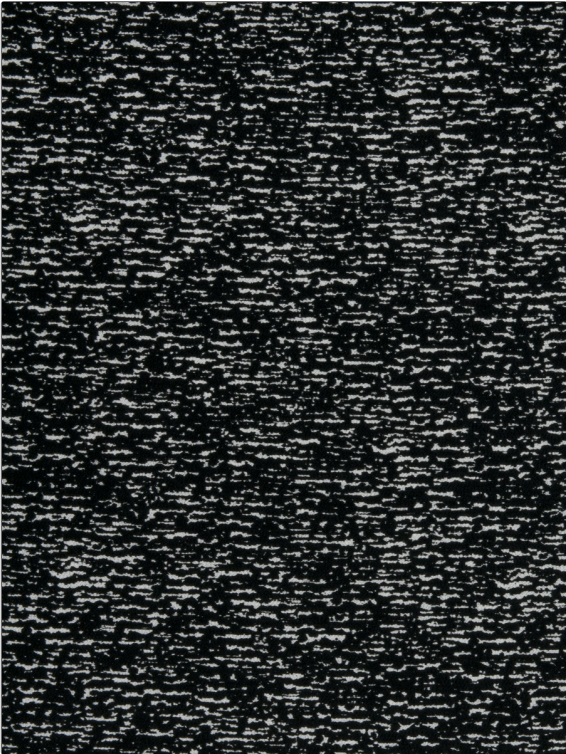


Fabric Product Details

PATTERN Coffee Bay
COLOR Zebra

BRAND	APPLICATION
Stroheim	Fabric
USES	CATEGORIES
Bedding, Upholstery	Wovens
BOOK	COLORS
Black And White	Multi-Color
DESIGN TYPES	RAILROADED
Texture Plain, Contemporary / Modern	Not Railed



WIDTH	VERTICAL REPEAT	HORIZONTAL REPEAT	CONTENT
55.00 in (139.70 cm)	0.00 in (0.00 cm)	0.00 in (0.00 cm)	66% Cotton, 31% Polyester, 3% Nylon
BACKING	FIRE CODES	DOUBLE RUBS	PRODUCT NUMBER
	UFAC Class I / NFPA 260	Exceeds 51,000 Double Rubs (Wyzenbeek Method)	8337401
DATE BOOKED	COUNTRY	CLEANING CODES	
02/2017	India	S	

ADDITIONAL PRODUCT NOTES

Passes 20,000 Martindale Tst, Ca Tb 117-2013, Exclusive Pattern