

Fabric Product Details

PATTERN **Sequoia**
COLOR **Night**

BRAND

Stroheim

APPLICATION

Fabric

USES

Drapery

CATEGORIES

**Wovens, Solids / Small
Scale Patterns, Chenille**

BOOK

**Escape (3 Books)
Tumbleweed / Night**

COLORS

Black, White

DESIGN TYPES

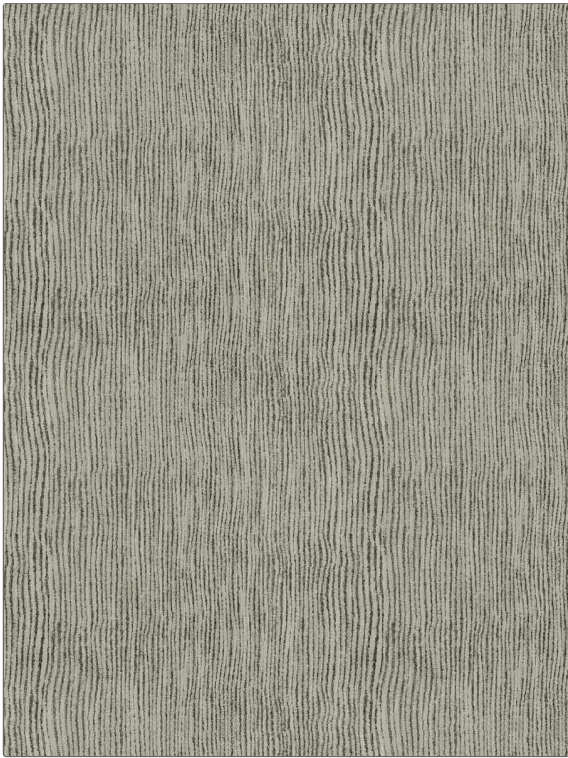
**Global / Ethnic, Small Scale
Woven, Stripes,
Contemporary / Modern,
Abstract**

SCALE

Small

RAILOADED

Railroaded



WIDTH

54.00 in (137.16 cm)

VERTICAL REPEAT

0.00 in (0.00 cm)

HORIZONTAL REPEAT

0.00 in (0.00 cm)

CONTENT

**49% Viscose, 26%
Polyester, 25% Cotton**

BACKING

FIRE CODES

UFAC Class I / NFPA 260

DOUBLE RUBS

**Exceeds 51,000 Double
Rubs (Wyzenbeek Method)**

PRODUCT NUMBER

8336605

DATE BOOKED

02/2023

COUNTRY

Turkey

CLEANING CODES

S

ADDITIONAL PRODUCT NOTES

Shown Railroaded, Exclusive Pattern