

# Fabric Product Details

**PATTERN** Trail Head  
**COLOR** Night

**BRAND**

**Stroheim**

**APPLICATION**

**Fabric**

**USES**

**Multipurpose, Upholstery**

**CATEGORIES**

**Wovens**

**BOOK**

**Escape (3 Books)  
Tumbleweed / Night**

**COLORS**

**Black**

**DESIGN TYPES**

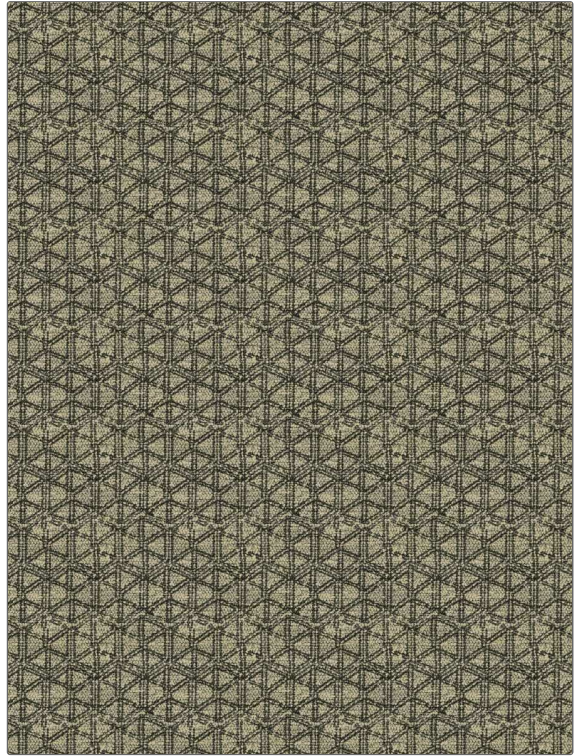
**Geometric, Global / Ethnic,  
Small Scale Woven**

**SCALE**

**Small**

**RAILROADED**

**Not Railroaded**



**WIDTH**

**54.00 in (137.16 cm)**

**VERTICAL REPEAT**

**4.75 in (12.06 cm)**

**HORIZONTAL REPEAT**

**2.25 in (5.72 cm)**

**CONTENT**

**50% Acrylic, 30% Polyester,  
20% Cotton**

**BACKING**

**FIRE CODES**

**UFAC Class I / NFPA 260**

**DOUBLE RUBS**

**Exceeds 51,000 Double  
Rubs (Wyzenbeek Method)**

**PRODUCT NUMBER**

**8335803**

**DATE BOOKED**

**02/2023**

**COUNTRY**

**Turkey**

**CLEANING CODES**

**S**

**ADDITIONAL PRODUCT NOTES**

**Ca Tb 117-2013, Exclusive Pattern**