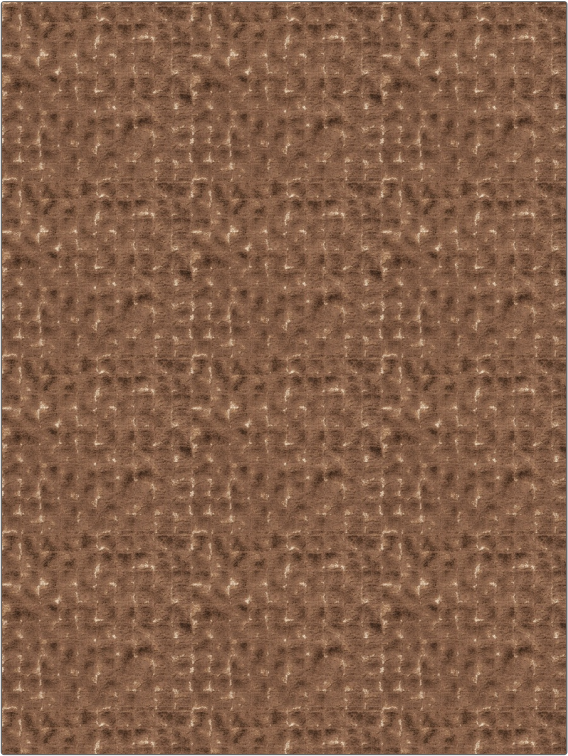


# Fabric Product Details

**PATTERN** Sycan  
**COLOR** 01

|               |                     |
|---------------|---------------------|
| <b>BRAND</b>  | <b>APPLICATION</b>  |
| Stroheim      | Fabric              |
| <b>USES</b>   | <b>CATEGORIES</b>   |
| Upholstery    | Wovens              |
| <b>COLORS</b> | <b>DESIGN TYPES</b> |
| Brown         | Solid               |
| <b>SCALE</b>  | <b>RAILROADED</b>   |
| Medium        | Not Railroaded      |



|                      |                         |   |                            |
|----------------------|-------------------------|---|----------------------------|
| <b>WIDTH</b>         | <b>VERTICAL REPEAT</b>  | <b>HORIZONTAL REPEAT</b>                      | <b>CONTENT</b>             |
| 55.00 in (139.70 cm) | 8.60 in (21.84 cm)      | 9.17 in (23.29 cm)                            | 86% Viscose, 14% Polyester |
| <b>BACKING</b>       | <b>FIRE CODES</b>       | <b>DOUBLE RUBS</b>                            | <b>PRODUCT NUMBER</b>      |
|                      | UFAC Class I / NFPA 260 | Exceeds 51,000 Double Rubs (Wyzenbeek Method) | 6814701                    |
| <b>COUNTRY</b>       | <b>CLEANING CODES</b>   |   |                            |
| Italy                | S                       |   |                            |

**ADDITIONAL PRODUCT NOTES**

Passes 20,000 Martindale Tst, Ca Tb 117-2013, Exclusive Pattern