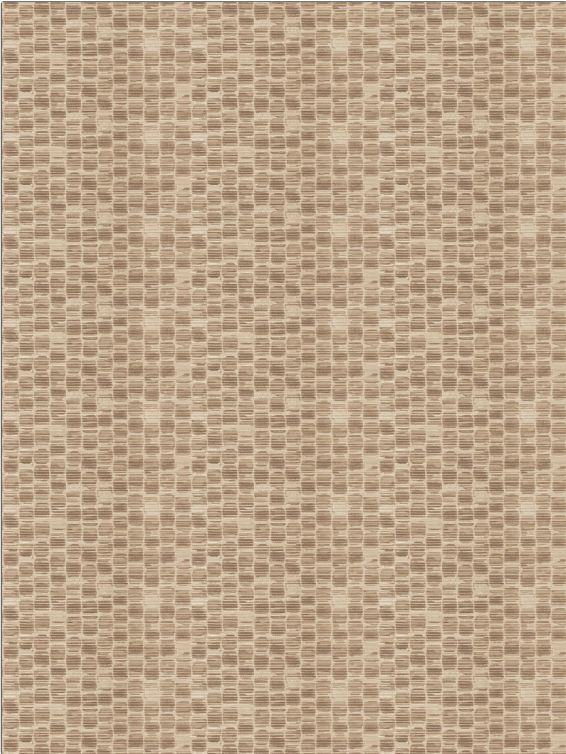


# Fabric Product Details

**PATTERN** Jarbidge  
**COLOR** 02

<b>BRAND</b>	<b>APPLICATION</b>
Stroheim	Fabric
<b>USES</b>	<b>CATEGORIES</b>
Drapery	Wovens
<b>COLORS</b>	<b>DESIGN TYPES</b>
Brown	Small Scale Woven
<b>SCALE</b>	<b>RAILROADED</b>
Small	Not Railroaded



<b>WIDTH</b>	<b>VERTICAL REPEAT</b>	<b>HORIZONTAL REPEAT</b>	<b>CONTENT</b>
54.00 in (137.16 cm)	4.75 in (12.06 cm)	9.00 in (22.86 cm)	42% Cotton, 36% Rayon, 22% Polyester
<b>BACKING</b>	<b>FIRE CODES</b>	<b>DOUBLE RUBS</b>	<b>PRODUCT NUMBER</b>
	UFAC Class I / NFPA 260	Exceeds 24,000 Double Rubs (Wyzenbeek Method)	6730002
<b>COUNTRY</b>	<b>CLEANING CODES</b>		
USA	S		

**ADDITIONAL PRODUCT NOTES**

Exclusive Pattern