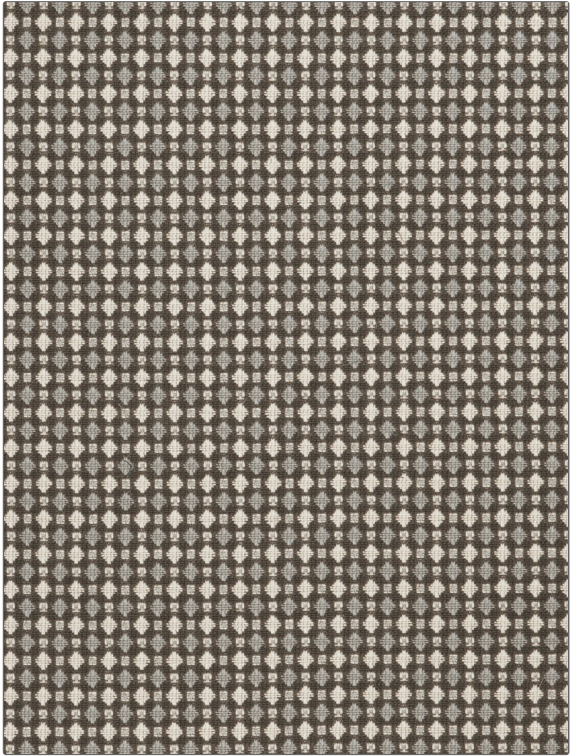


# Fabric Product Details

**PATTERN** Mulchatna  
**COLOR** Ash Brown

<b>BRAND</b>	<b>APPLICATION</b>
Stroheim	Fabric
<b>USES</b>	<b>CATEGORIES</b>
Upholstery	Linen
<b>COLORS</b>	<b>DESIGN TYPES</b>
Brown	Global / Ethnic
<b>SCALE</b>	<b>RAILROADED</b>
Small	Not Railroaded



<b>WIDTH</b>	<b>VERTICAL REPEAT</b>	<b>HORIZONTAL REPEAT</b>	<b>CONTENT</b>
55.00 in (139.70 cm)	0.75 in (1.90 cm)	0.75 in (1.90 cm)	38% Viscose, 29% Linen, 28% Cotton, 5% Polyester
<b>BACKING</b>	<b>FIRE CODES</b>	<b>DOUBLE RUBS</b>	<b>PRODUCT NUMBER</b>
	UFAC Class I / NFPA 260	Exceeds 21,000 Double Rubs (Wyzenbeek Method)	6719802
<b>COUNTRY</b>	<b>CLEANING CODES</b>		
Italy	S		

**ADDITIONAL PRODUCT NOTES**

Passes 27,000 Martindale Tst, Exclusive Pattern