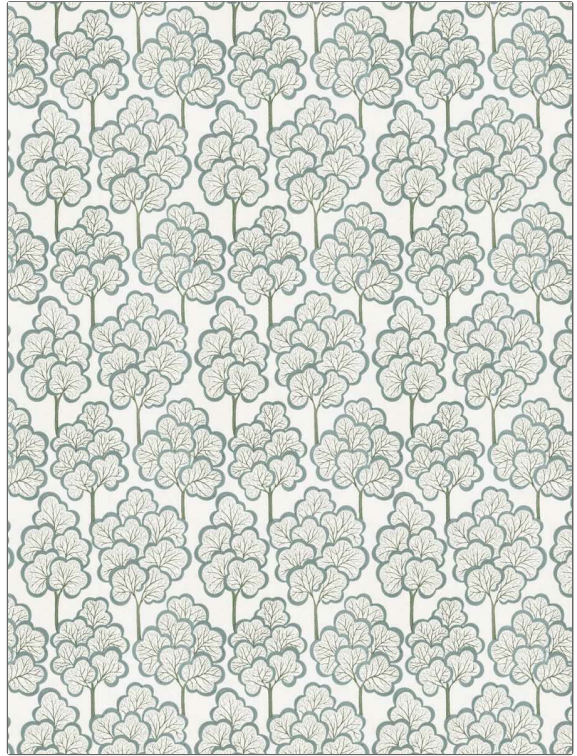


# Fabric Product Details

**PATTERN** Zahara  
**COLOR** 04

<b>BRAND</b>	<b>APPLICATION</b>
Stroheim	Fabric
<b>USES</b>	<b>CATEGORIES</b>
Bedding, Drapery	Crewels / Embroideries, Linen
<b>COLORS</b>	<b>DESIGN TYPES</b>
Light Blue, Aqua / Teal, Light Green	Embroidery, Leaves, Tropical / Botanical, Contemporary / Modern, Crewel
<b>SCALE</b>	<b>RAILROADED</b>
Large	Not Railroaded



<b>WIDTH</b>	<b>VERTICAL REPEAT</b>	<b>HORIZONTAL REPEAT</b>	<b>CONTENT</b>
51.00 in (129.54 cm)	18.75 in (47.62 cm)	17.00 in (43.18 cm)	Embroidery: 45% Acrylic, 35% Viscose, 20% Spun Polyester, Base: 60% Linen, 40% Cotton
<b>BACKING</b>	<b>PRODUCT NUMBER</b>	<b>COUNTRY</b>	<b>CLEANING CODES</b>
	6554804	India	S

**ADDITIONAL PRODUCT NOTES**

Ca Tb 117-2013, Exclusive Pattern, Embroidered Textiles Are Not, Guaranteed For Precise Color, Matching And Colorfastness., Color Placement Of Embroidery, May Vary. All Measurements, Quoted For Repeats Are, Approximate.