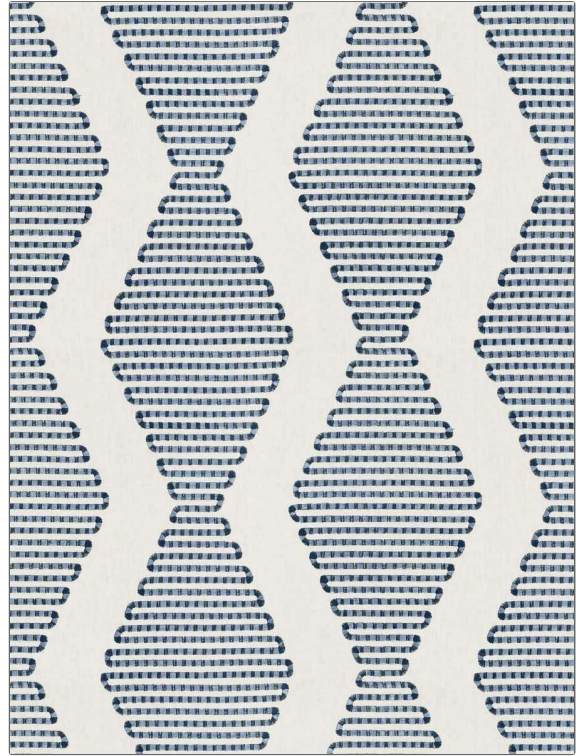


# Fabric Product Details

**PATTERN** Kemali  
**COLOR** 04

<b>BRAND</b>	<b>APPLICATION</b>
Stroheim	Fabric
<b>USES</b>	<b>CATEGORIES</b>
Bedding, Drapery	Crewels / Embroideries, Linen
<b>COLORS</b>	<b>DESIGN TYPES</b>
Blue	Embroidery, Ogee
<b>SCALE</b>	<b>RAILROADED</b>
Large	Not Railroaded



<b>WIDTH</b>	<b>VERTICAL REPEAT</b>	<b>HORIZONTAL REPEAT</b>	<b>CONTENT</b>
50.00 in (127.00 cm)	14.75 in (37.46 cm)	16.50 in (41.91 cm)	Embroidery: 100% Viscose, Base: 55% Linen, 45% Cotton
<b>BACKING</b>	<b>PRODUCT NUMBER</b>	<b>COUNTRY</b>	<b>CLEANING CODES</b>
	6553404	India	S

**ADDITIONAL PRODUCT NOTES**

Exclusive Pattern, Embroidered Textiles Are Not, Guaranteed For Precise Color, Matching And Colorfastness., Color Placement Of Embroidery, May Vary. All Measurements, Quoted For Repeats Are, Approximate.