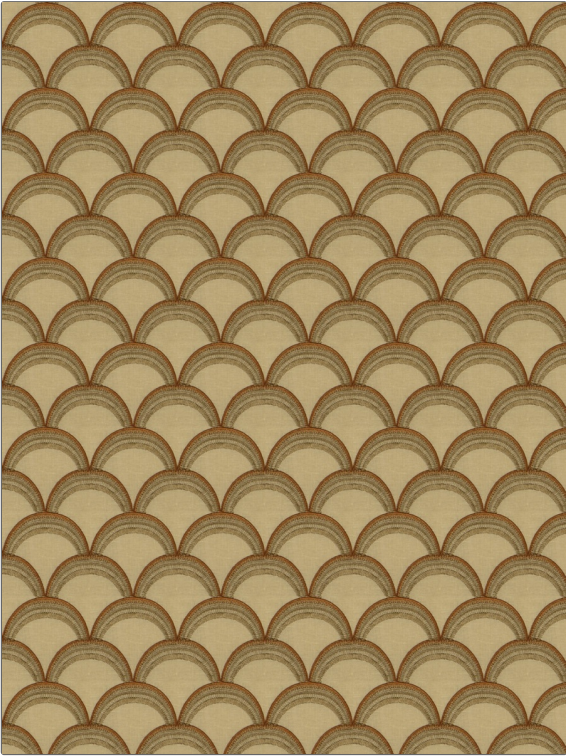


Fabric Product Details

PATTERN	Eastport
COLOR	Autumn

BRAND	APPLICATION
Stroheim	Fabric
USES	CATEGORIES
Bedding, Drapery	Crewels / Embroideries, Linen
COLORS	DESIGN TYPES
Taupe / Tan, Orange / Spice	Embroidery, Abstract
SCALE	RAILOADED
Medium	Not Railroaded



WIDTH	VERTICAL REPEAT	HORIZONTAL REPEAT	CONTENT
51.00 in (129.54 cm)	4.20 in (10.67 cm)	4.20 in (10.67 cm)	100% Linen, Embroidery: 100% Viscose
BACKING	PRODUCT NUMBER	COUNTRY	CLEANING CODES
	0651805	India	S

ADDITIONAL PRODUCT NOTES
Exclusive Pattern, Embroidered Textiles Are Not, Guaranteed For Precise Color, Matching And Colorfastness., Color Placement Of Embroidery, May Vary. All Measurements, Quoted For Repeats Are, Approximate.