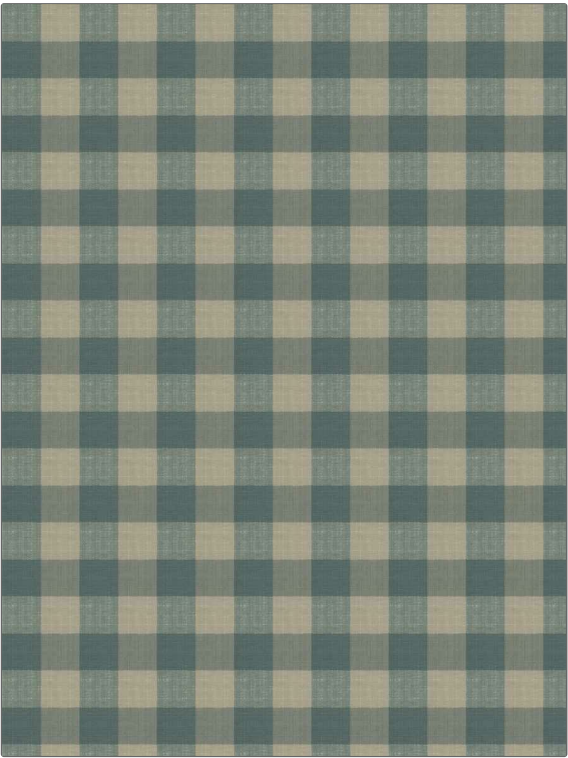


Fabric Product Details

|   |                   |  |  |
|---|-------------------|--|--|
| PATTERN                                       | Biron Strie Check |  |  |
| COLOR   | Canyon Blue       |  |  |
| BRAND   | APPLICATION       |  |  |
| Stroheim                                      | Fabric            |  |  |
| USES  | CATEGORIES        |  |  |
| Bedding, Drapery,<br>Multipurpose, Upholstery | Wovens            |  |  |
| BOOK  | COLORS            |  |  |
| Biron Strie Check                             | Blue              |  |  |
| DESIGN TYPES                                  | SCALE             |  |  |
| Check / Plaid                                 | Small             |  |  |
| RAILROADED                                    |                   |  |  |
| Not Railroaded                                |                   |  |  |



|                      |                               |   |                |
|----------------------|-------------------------------|---|----------------|
| WIDTH                | VERTICAL REPEAT               | HORIZONTAL REPEAT                             | CONTENT        |
| 54.00 in (137.16 cm) | 3.70 in (9.40 cm)             | 3.70 in (9.40 cm)                             | 100% Cotton    |
| BACKING              | FIRE CODES                    | DOUBLE RUBS                                   | PRODUCT NUMBER |
|                      | UFAC Class I, Passes NFPA 260 | Exceeds 24,000 Double Rubs (Wyzenbeek Method) | 6341444        |
| DATE BOOKED          | COUNTRY                       | CLEANING CODES                                |                |
| 03/2019              | India                         | S   |                |

|  |
|--|
| ADDITIONAL PRODUCT NOTES   |
| Exclusive Pattern, Handloomed Fabrics Are Not, Guaranteed For Precise Color, Matching. Cutting From, Current Stock Is Advised., All Quoted Repeats Are, Approximate. |