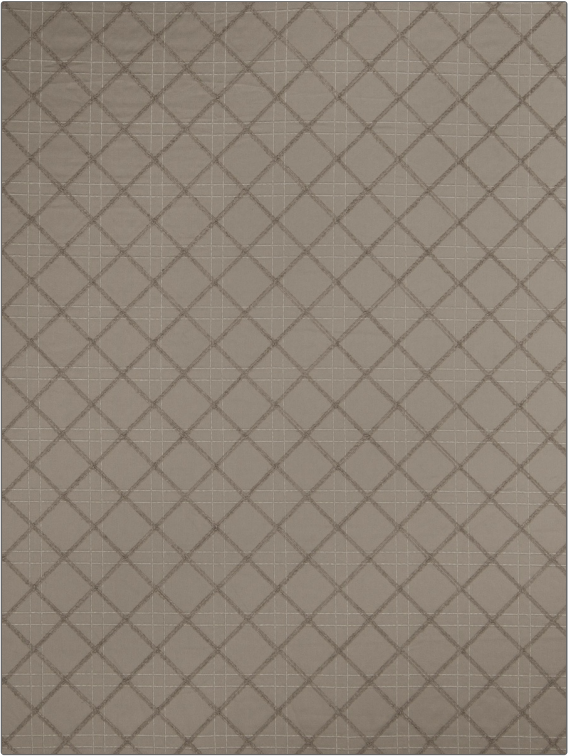


Fabric Product Details

PATTERN	Hardwick Lattice
COLOR	02

BRAND	APPLICATION
Stroheim	Fabric
USES	CATEGORIES
Bedding, Drapery, Multipurpose, Upholstery	Wovens, Crewels / Embroideries
COLORS	DESIGN TYPES
Grey, Taupe / Tan	Embroidery, Diamond
SCALE	RAILROADED
Small	Not Railroaded



WIDTH	FINISH	VERTICAL REPEAT	HORIZONTAL REPEAT
55.00 in (139.70 cm)	Soil & Stain Repellent Finish	3.10 in (7.87 cm)	3.10 in (7.87 cm)
CONTENT	BACKING	PRODUCT NUMBER	COUNTRY
78% Cotton, 13% Viscose, 5% Polyester, 4% Linen		6325102	Italy
CLEANING CODES			
S			

ADDITIONAL PRODUCT NOTES
Soil & Stain Repellent Finish, Exclusive Pattern, Embroidered Textiles Are Not, Guaranteed For Precise Color, Matching And Colorfastness., Color Placement Of Embroidery, May Vary. All Measurements, Quoted For Repeats Are, Approximate.