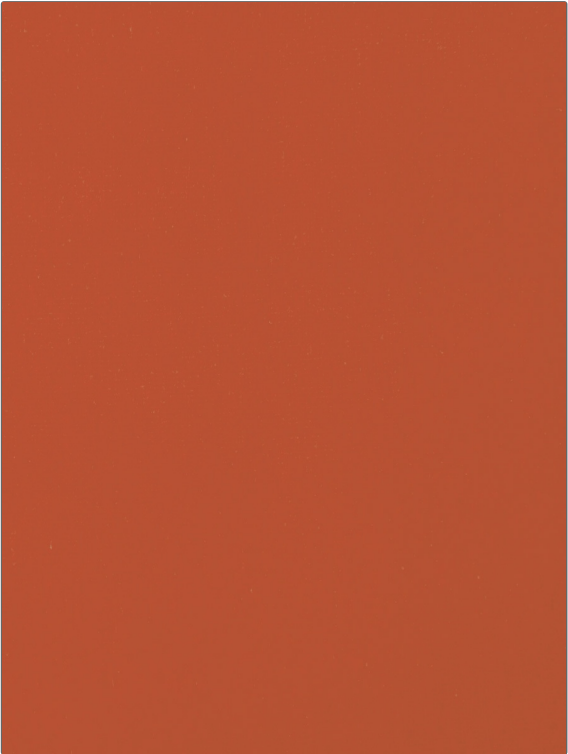


Fabric Product Details

| | |
|----------------|----------------------|
| PATTERN | Rivoli Velvet |
| COLOR | Flamingo |



| | |
|----------------------------|---------------------------|
| BRAND | APPLICATION |
| Stroheim | Fabric |
| USES | CATEGORIES |
| Drapery, Upholstery | Velvet / Grospoint |
| BOOK | COLORS |
| Rivoli Velvet | Pink |
| DESIGN TYPES | RAILROADED |
| Solid | Not Railroaded |

| | | | |
|-----------------------------|--------------------------------|--|-----------------------|
| WIDTH | VERTICAL REPEAT | HORIZONTAL REPEAT | CONTENT |
| 54.00 in (137.16 cm) | 0.00 in (0.00 cm) | 0.00 in (0.00 cm) | 100% Cotton |
| BACKING | FIRE CODES | DOUBLE RUBS | PRODUCT NUMBER |
| | UFAC Class I / NFPA 260 | Exceeds 40,000 Double Rubs (Wyzenbeek Method) | 5427017 |
| DATE BOOKED | COUNTRY | CLEANING CODES | |
| 11/2014 | Holland | S | |