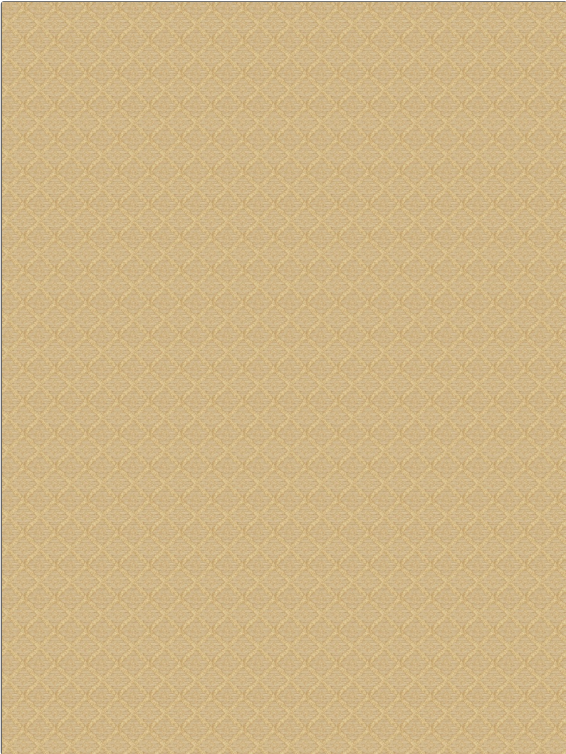


Fabric Product Details

PATTERN **Cellini Diamond**  
COLOR **02**

BRAND	APPLICATION
<b>Stroheim</b>	<b>Fabric</b>
USES	CATEGORIES
<b>Bedding, Drapery, Upholstery</b>	<b>Wovens</b>
COLORS	DESIGN TYPES
<b>Taupe / Tan, Metallic</b>	<b>Diamond</b>
SCALE	RAILROADED
<b>Small</b>	<b>Not Railroaded</b>



WIDTH	FINISH	VERTICAL REPEAT	HORIZONTAL REPEAT
<b>54.00 in (137.16 cm)</b>	<b>Soil &amp; Stain Repellent Finish</b>	<b>1.50 in (3.81 cm)</b>	<b>1.50 in (3.81 cm)</b>
CONTENT	BACKING	PRODUCT NUMBER	COUNTRY
<b>35% Silk, 29% Cotton, 26% Zari, 7% Linen, 3% Viscose</b>		<b>4538802</b>	<b>India</b>
CLEANING CODES			
<b>S</b>			

ADDITIONAL PRODUCT NOTES  
**Soil & Stain Repellent Finish, Exclusive Pattern**