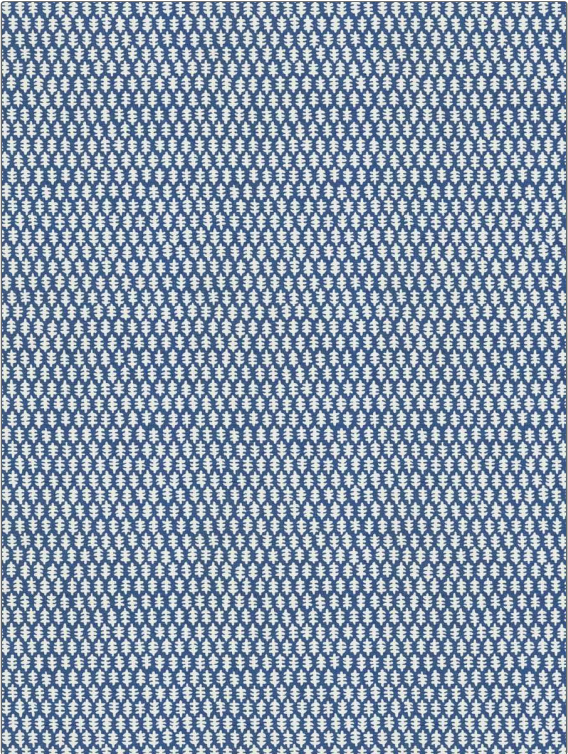


# Fabric Product Details

**PATTERN** VIVI  
**COLOR** Navy

<b>BRAND</b>	<b>APPLICATION</b>
Stroheim	Fabric
<b>USES</b>	<b>CATEGORIES</b>
Bedding, Drapery, Multipurpose, Upholstery	Solids / Small Scale Patterns, Prints, Linen
<b>BOOK</b>	<b>COLORS</b>
Color: Bluebell - Laurel	Blue, Navy
<b>DESIGN TYPES</b>	<b>SCALE</b>
Global / Ethnic, Leaves, Print Pattern	Small
<b>RAILROADED</b>	
Not Railroaded	



<b>WIDTH</b>	<b>VERTICAL REPEAT</b>	<b>HORIZONTAL REPEAT</b>	<b>CONTENT</b>
54.00 in (137.16 cm)	11.62 in (29.51 cm)	9.00 in (22.86 cm)	57% Linen, 43% Cotton
<b>BACKING</b>	<b>FIRE CODES</b>	<b>DOUBLE RUBS</b>	<b>PRODUCT NUMBER</b>
	UFAC Class I / NFPA 260	Exceeds 32,000 Double Rubs (Wyzenbeek Method)	4342202
<b>DATE BOOKED</b>	<b>COUNTRY</b>	<b>CLEANING CODES</b>	
06/2021	China	S	

**ADDITIONAL PRODUCT NOTES**  
 Ca Tb 117-2013, Exclusive Pattern