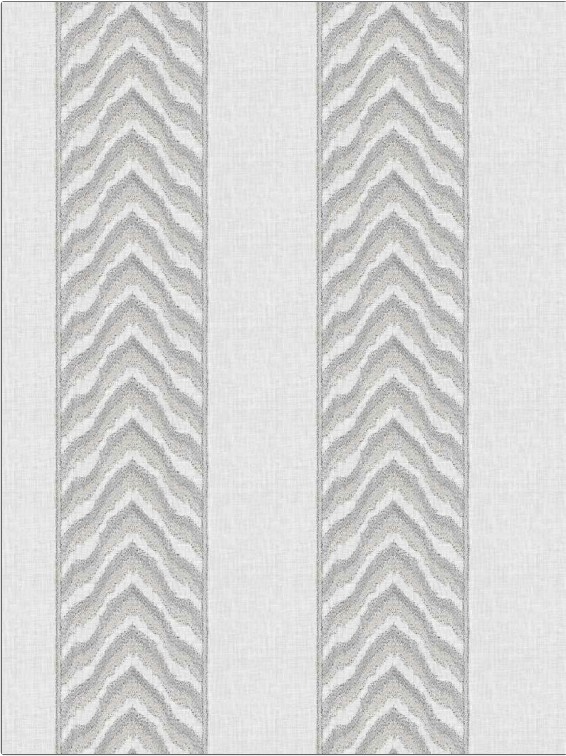


Fabric Product Details

PATTERN Nuria
COLOR 101

BRAND	APPLICATION
Stroheim	Fabric
USES	CATEGORIES
Drapery	Sheer, Crewels / Embroideries
COLORS	DESIGN TYPES
Grey, Linen	Embroidery, Flamestitch, Global / Ethnic, Stripes, Chevron
SCALE	RAILROADED
Medium	Not Railroaded



WIDTH	VERTICAL REPEAT	HORIZONTAL REPEAT	CONTENT
50.00 in (127.00 cm)	15.35 in (38.99 cm)	12.50 in (31.75 cm)	Embroidery: 72% Viscose, 28% Polyester, Base: 100% Linen
BACKING	PRODUCT NUMBER	COUNTRY	CLEANING CODES
	1969201	India	S

ADDITIONAL PRODUCT NOTES

Exclusive Pattern, Embroidered Textiles Are Not, Guaranteed For Precise Color, Matching And Colorfastness., Color Placement Of Embroidery, May Vary. All Measurements, Quoted For Repeats Are, Approximate.