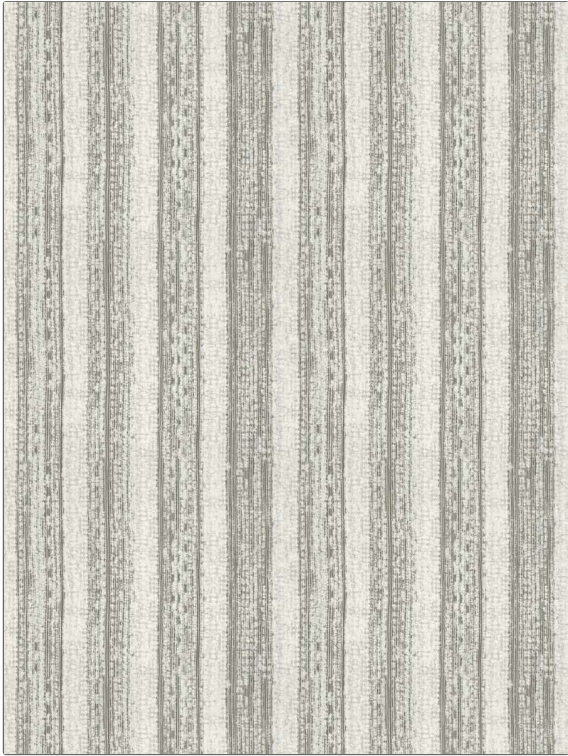


Fabric Product Details

PATTERN	Joelle
COLOR	Lava Stone
BRAND	APPLICATION
Stroheim	Fabric
USES	CATEGORIES
Upholstery	Wovens
BOOK	COLORS
Ambiance (3 Books) Lava Stone / Natural	Black, Grey
DESIGN TYPES	SCALE
Global / Ethnic, Stripes, Contemporary / Modern	Medium
RAILOADED	
Railroaded	



WIDTH	VERTICAL REPEAT	HORIZONTAL REPEAT	CONTENT
54.00 in (137.16 cm)	0.00 in (0.00 cm)	13.50 in (34.29 cm)	52% Viscose, 35% Cotton, 9% Polyester, 4% Linen
BACKING	FIRE CODES	DOUBLE RUBS	PRODUCT NUMBER
	UFAC Class I / NFPA 260	Exceeds 15,000 Double Rubs (Wyzenbeek Method)	1718503
DATE BOOKED	COUNTRY	CLEANING CODES	
02/2024	Turkey	S	

ADDITIONAL PRODUCT NOTES
Passes 21,000 Martindale Tst, Ca Tb 117-2013, Shown Railroaded, Exclusive Pattern