

# Fabric Product Details

**PATTERN** Orla  
**COLOR** 01

**BRAND**

**Stroheim**

**APPLICATION**

**Fabric**

**USES**

**Upholstery**

**CATEGORIES**

**Wovens**

**COLORS**

**Coral / Peach, Pink**

**DESIGN TYPES**

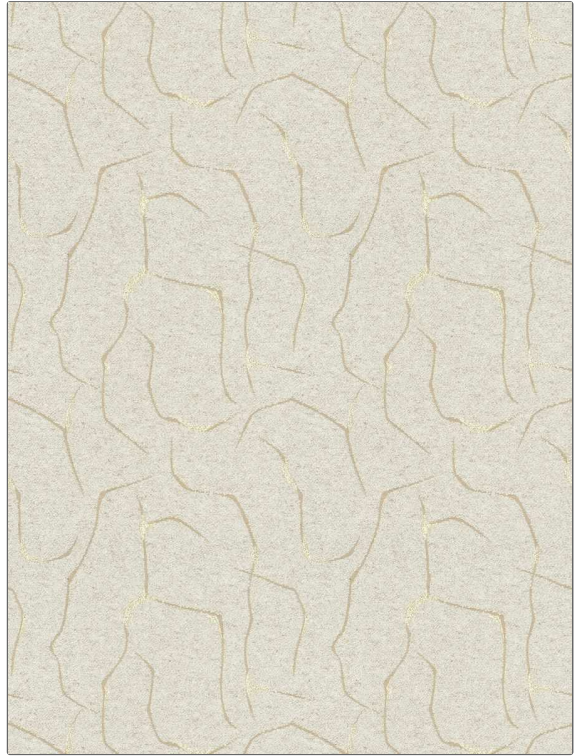
**Geometric, Contemporary / Modern**

**SCALE**

**Large**

**RAILROADED**

**Not Railroaded**



**WIDTH**

**54.00 in (137.16 cm)**

**VERTICAL REPEAT**

**27.00 in (68.58 cm)**

**HORIZONTAL REPEAT**

**27.00 in (68.58 cm)**

**CONTENT**

**60% Polyester, 18% Acrylic, 11% Linen, 11% Cotton**

**BACKING**

**FIRE CODES**

**UFAC Class I / NFPA 260**

**DOUBLE RUBS**

**Exceeds 36,000 Double Rubs (Wyzenbeek Method)**

**PRODUCT NUMBER**

**1718201**

**COUNTRY**

**Turkey**

**CLEANING CODES**

**S**

**ADDITIONAL PRODUCT NOTES**

**Passes 23,000 Martindale Tst, Ca Tb 117-2013, Exclusive Pattern**