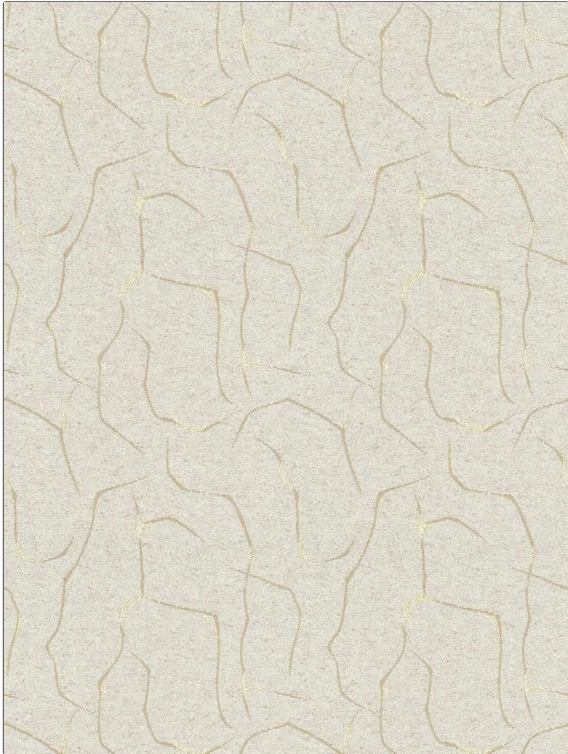


# Fabric Product Details

<b>PATTERN</b>	<b>Orla</b>
<b>COLOR</b>	<b>Rosewood</b>
<b>BRAND</b>	<b>APPLICATION</b>
<b>Stroheim</b>	<b>Fabric</b>
<b>USES</b>	<b>CATEGORIES</b>
<b>Upholstery</b>	<b>Wovens</b>
<b>BOOK</b>	<b>COLORS</b>
<b>Ambiance (3 Books) Rosewood / Whisper</b>	<b>Coral / Peach, Pink</b>
<b>DESIGN TYPES</b>	<b>SCALE</b>
<b>Geometric, Contemporary / Modern</b>	<b>Large</b>
<b>RAILROADED</b>	
<b>Not Railroaded</b>	



<b>WIDTH</b>	<b>VERTICAL REPEAT</b>	<b>HORIZONTAL REPEAT</b>	<b>CONTENT</b>
<b>54.00 in (137.16 cm)</b>	<b>27.00 in (68.58 cm)</b>	<b>27.00 in (68.58 cm)</b>	<b>60% Polyester, 18% Acrylic, 11% Linen, 11% Cotton</b>
<b>BACKING</b>	<b>FIRE CODES</b>	<b>DOUBLE RUBS</b>	<b>PRODUCT NUMBER</b>
	<b>UFAC Class I / NFPA 260</b>	<b>Exceeds 36,000 Double Rubs (Wyzenbeek Method)</b>	<b>1718101</b>
<b>DATE BOOKED</b>	<b>COUNTRY</b>	<b>CLEANING CODES</b>	
<b>02/2024</b>	<b>Turkey</b>	<b>S</b>	

<b>ADDITIONAL PRODUCT NOTES</b>
<b>Passes 23,000 Martindale Tst, Ca Tb 117-2013, Exclusive Pattern</b>