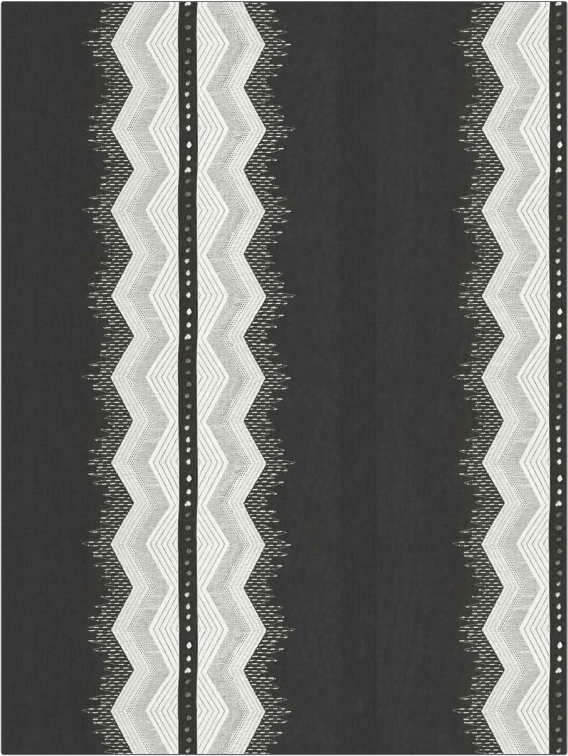


# Fabric Product Details

**PATTERN** Pandy Stripe  
**COLOR** 03

<b>BRAND</b>	<b>APPLICATION</b>
Stroheim	Fabric
<b>USES</b>	<b>CATEGORIES</b>
Bedding, Drapery	Crewels / Embroideries
<b>COLORS</b>	<b>DESIGN TYPES</b>
Black, Grey	Embroidery, Global / Ethnic, Stripes, Contemporary / Modern, Diamond
<b>SCALE</b>	<b>RAILROADED</b>
Large	Not Railroaded



<b>WIDTH</b>	<b>VERTICAL REPEAT</b>	<b>HORIZONTAL REPEAT</b>	<b>CONTENT</b>
53.00 in (134.62 cm)	4.00 in (10.16 cm)	17.75 in (45.08 cm)	Embroidery: 90% Viscose, 10% Metallic, Base: 100% Linen
<b>BACKING</b>	<b>PRODUCT NUMBER</b>	<b>COUNTRY</b>	<b>CLEANING CODES</b>
	1603803	India	S

**ADDITIONAL PRODUCT NOTES**

Ca Tb 117-2013, Exclusive Pattern, Embroidered Textiles Are Not, Guaranteed For Precise Color, Matching And Colorfastness., Color Placemnt Of Embroidery, May Vary. All Measurements, Quoted For Repeats Are, Approximate.