

Fabric Product Details

PATTERN
COLOR

Pandy Stripe
Lava Stone

BRAND

Stroheim

APPLICATION

Fabric

USES

Bedding, Drapery

CATEGORIES

Crewels / Embroideries

BOOK

Ambiance (3 Books) Lava
Stone / Natural

COLORS

Black, Grey

DESIGN TYPES

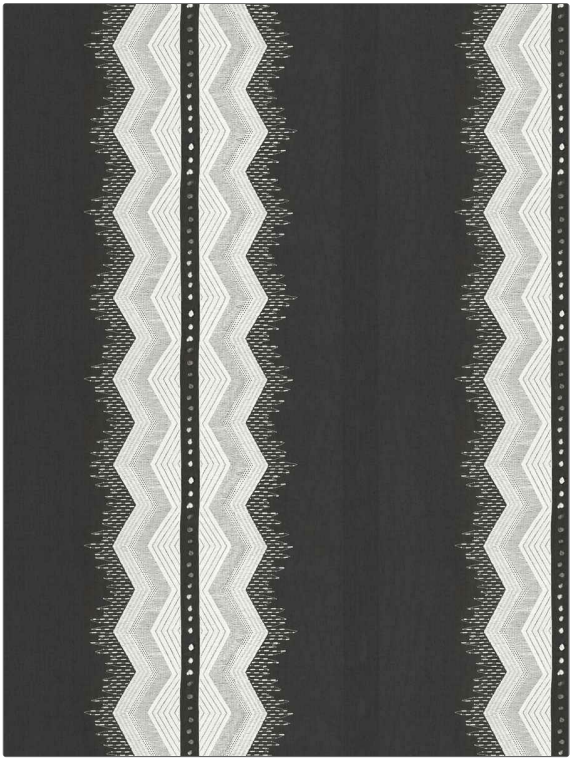
Embroidery, Global /
Ethnic, Stripes,
Contemporary / Modern,
Diamond

SCALE

Large

RAILROADED

Not Railroaded



WIDTH

53.00 in (134.62 cm)

VERTICAL REPEAT

4.00 in (10.16 cm)

HORIZONTAL REPEAT

17.75 in (45.08 cm)

CONTENT

Embroidery: 90% Viscose,
10% Metallic, Base: 100%
Linen

BACKING

PRODUCT NUMBER

1603703

DATE BOOKED

02/2024

COUNTRY

India

CLEANING CODES

S

ADDITIONAL PRODUCT NOTES

Ca Tb 117-2013, Exclusive Pattern, Embroidered Textiles Are Not, Guaranteed For Precise Color, Matching And Colorfastness., Color Placement Of Embroidery, May Vary. All Measurements, Quoted For Repeats Are, Approximate.