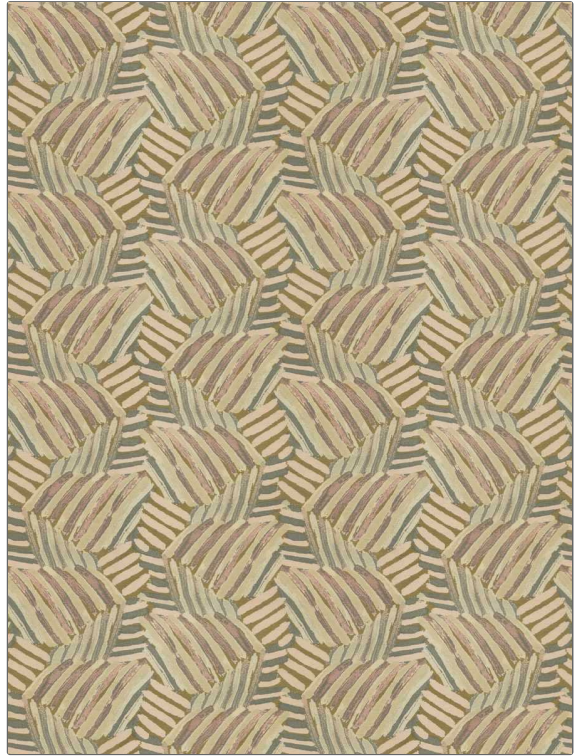


# Fabric Product Details

**PATTERN** Dondi  
**COLOR** 03

<b>BRAND</b>	<b>APPLICATION</b>
Stroheim	Fabric
<b>USES</b>	<b>CATEGORIES</b>
Bedding, Drapery	Wovens, Faux Silk
<b>COLORS</b>	<b>DESIGN TYPES</b>
Lavender / Purple, Gold, Coral / Peach, Pink	Global / Ethnic, Jacquard Pattern, Contemporary / Modern, Abstract
<b>SCALE</b>	<b>RAILROADED</b>
Large	Not Railroaded



<b>WIDTH</b>	<b>VERTICAL REPEAT</b>	<b>HORIZONTAL REPEAT</b>	<b>CONTENT</b>
54.00 in (137.16 cm)	18.00 in (45.72 cm)	26.75 in (67.94 cm)	53% Viscose, 37% Cotton, 10% Polyester
<b>BACKING</b>	<b>FIRE CODES</b>	<b>PRODUCT NUMBER</b>	<b>COUNTRY</b>
	UFAC Class I / NFPA 260	1602903	India
<b>CLEANING CODES</b>			
S			

**ADDITIONAL PRODUCT NOTES**

Ca Tb 117-2013, Exclusive Pattern