

# Fabric Product Details

**PATTERN** Ryker  
**COLOR** Galaxy

**BRAND**

**Stroheim**

**APPLICATION**

**Fabric**

**USES**

**Upholstery**

**CATEGORIES**

**Velvet / Grospoint,  
Wovens**

**BOOK**

**Ambiance (3 Books) Galaxy  
/ Waterfall**

**COLORS**

**Blue, Navy**

**DESIGN TYPES**

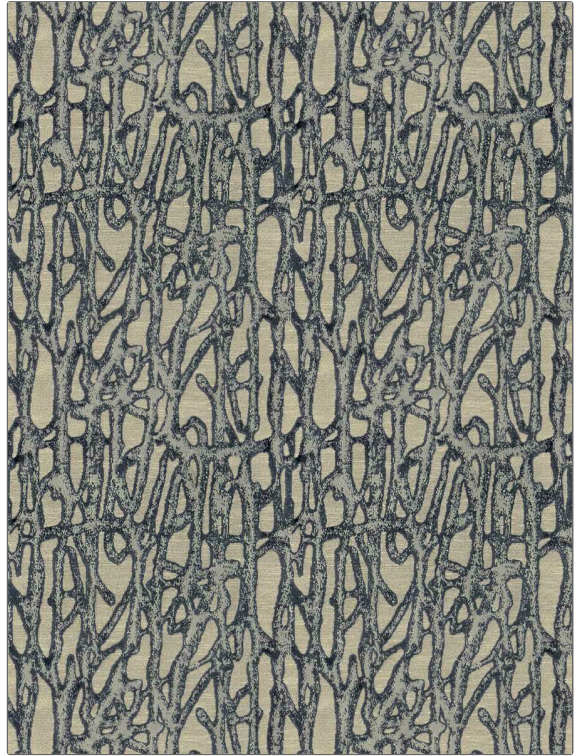
**Contemporary / Modern,  
Abstract**

**SCALE**

**Medium**

**RAILROADED**

**Not Railroaded**



**WIDTH**

**54.00 in (137.16 cm)**

**VERTICAL REPEAT**

**16.00 in (40.64 cm)**

**HORIZONTAL REPEAT**

**13.50 in (34.29 cm)**

**CONTENT**

**49% Polyester, 38%  
Viscose, 13% Cotton**

**BACKING**

**100% Latex Backing**

**FIRE CODES**

**UFAC Class I / NFPA 260**

**DOUBLE RUBS**

**Exceeds 30,000 Double  
Rubs (Wyzenbeek Method)**

**PRODUCT NUMBER**

**1590404**

**DATE BOOKED**

**02/2024**

**COUNTRY**

**India**

**CLEANING CODES**

**S**

**ADDITIONAL PRODUCT NOTES**

**Ca Tb 117-2013, 100% Latex Backing, Exclusive Pattern**