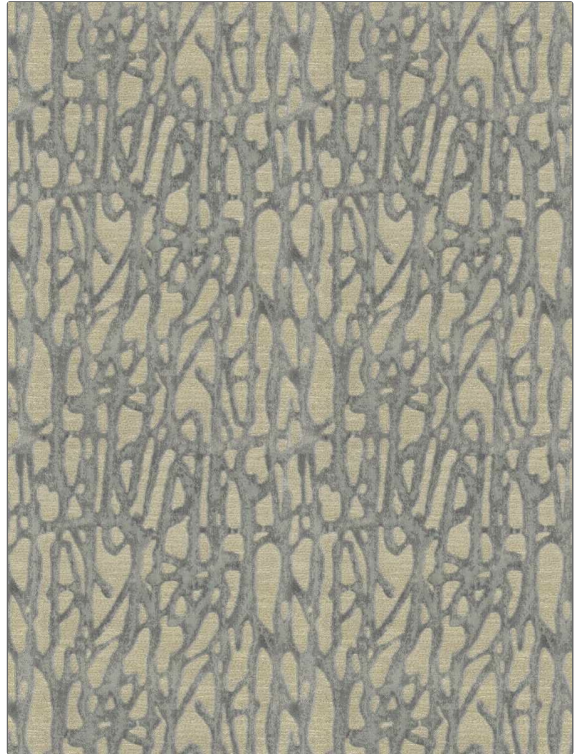


# Fabric Product Details

<b>PATTERN</b>	<b>Ryker</b>
<b>COLOR</b>	<b>Waterfall</b>
<b>BRAND</b>	<b>APPLICATION</b>
<b>Stroheim</b>	<b>Fabric</b>
<b>USES</b>	<b>CATEGORIES</b>
<b>Upholstery</b>	<b>Velvet / Grospoint, Wovens</b>
<b>BOOK</b>	<b>COLORS</b>
<b>Ambiance (3 Books) Galaxy / Waterfall</b>	<b>Light Blue</b>
<b>DESIGN TYPES</b>	<b>SCALE</b>
<b>Contemporary / Modern, Abstract</b>	<b>Medium</b>
<b>RAILROADED</b>	
<b>Not Railroaded</b>	



<b>WIDTH</b>	<b>VERTICAL REPEAT</b>	<b>HORIZONTAL REPEAT</b>	<b>CONTENT</b>
<b>54.00 in (137.16 cm)</b>	<b>16.00 in (40.64 cm)</b>	<b>13.50 in (34.29 cm)</b>	<b>49% Polyester, 38% Viscose, 13% Cotton</b>
<b>BACKING</b>	<b>FIRE CODES</b>	<b>DOUBLE RUBS</b>	<b>PRODUCT NUMBER</b>
<b>100% Latex Backing</b>	<b>UFAC Class I / NFPA 260</b>	<b>Exceeds 30,000 Double Rubs (Wyzenbeek Method)</b>	<b>1590402</b>
<b>DATE BOOKED</b>	<b>COUNTRY</b>	<b>CLEANING CODES</b>	
<b>02/2024</b>	<b>India</b>	<b>S</b>	

<b>ADDITIONAL PRODUCT NOTES</b>
<b>Ca Tb 117-2013, 100% Latex Backing, Exclusive Pattern</b>