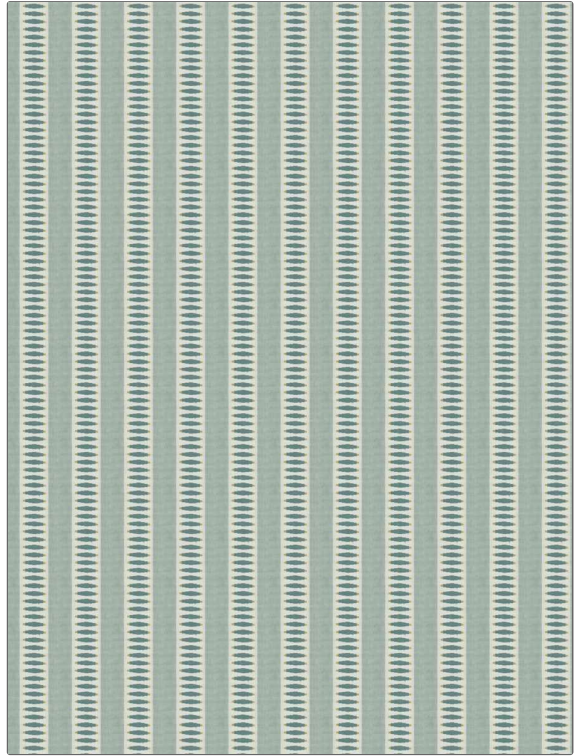


# Fabric Product Details

|   |  |
|---|--|
| <b>PATTERN</b>                                    | <b>Zaza</b>                                  |
| <b>COLOR</b>                                      | <b>Tahiti</b>                                |
| <b>BRAND</b>                                      | <b>APPLICATION</b>                           |
| <b>Stroheim</b>                                   | <b>Fabric</b>                                |
| <b>USES</b>                                       | <b>CATEGORIES</b>                            |
| <b>Bedding, Drapery, Multipurpose, Upholstery</b> | <b>Wovens, Solids / Small Scale Patterns</b> |
| <b>BOOK</b>                                       | <b>COLORS</b>                                |
| <b>Color Vol. II Oceanside / Tahiti</b>           | <b>Aqua / Teal</b>                           |
| <b>DESIGN TYPES</b>                               | <b>SCALE</b>                                 |
| <b>Global / Ethnic, Stripes, Dots / Circles</b>   | <b>Small</b>                                 |
| <b>RAILROADED</b>                                 |  |
| <b>Not Railroaded</b>                             |  |



|                             |                                |  |                       |
|-----------------------------|--------------------------------|--|-----------------------|
| <b>WIDTH</b>                | <b>VERTICAL REPEAT</b>         | <b>HORIZONTAL REPEAT</b>                             | <b>CONTENT</b>        |
| <b>54.00 in (137.16 cm)</b> | <b>0.50 in (1.27 cm)</b>       | <b>2.50 in (6.35 cm)</b>                             | <b>100% Cotton</b>    |
| <b>BACKING</b>              | <b>FIRE CODES</b>              | <b>DOUBLE RUBS</b>                                   | <b>PRODUCT NUMBER</b> |
|                             | <b>UFAC Class I / NFPA 260</b> | <b>Exceeds 24,000 Double Rubs (Wyzenbeek Method)</b> | <b>1386001</b>        |
| <b>DATE BOOKED</b>          | <b>COUNTRY</b>                 | <b>CLEANING CODES</b>                                |                       |
| <b>05/2023</b>              | <b>India</b>                   | <b>S</b>   |                       |

|                                 |
|---------------------------------|
| <b>ADDITIONAL PRODUCT NOTES</b> |
| <b>Exclusive Pattern</b>        |