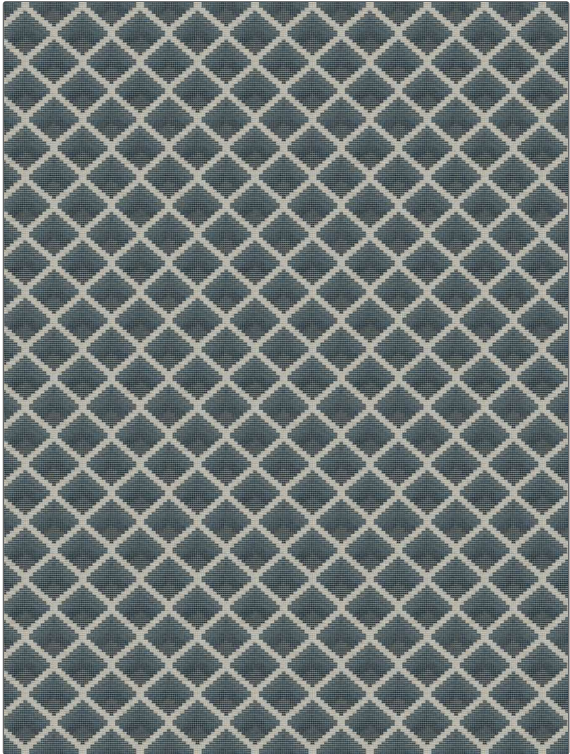


# Fabric Product Details

**PATTERN** Sussette  
**COLOR** Oceanside

<b>BRAND</b>	<b>APPLICATION</b>
<b>Stroheim</b>	<b>Fabric</b>
<b>USES</b>	<b>CATEGORIES</b>
<b>Upholstery</b>	<b>Wovens</b>
<b>BOOK</b>	<b>COLORS</b>
<b>Color Vol. II Oceanside / Tahiti</b>	<b>Blue, Navy</b>
<b>DESIGN TYPES</b>	<b>SCALE</b>
<b>Geometric, Diamond</b>	<b>Small</b>
<b>RAILROADED</b>	
<b>Not Railroaded</b>	



<b>WIDTH</b>	<b>VERTICAL REPEAT</b>	<b>HORIZONTAL REPEAT</b>	<b>CONTENT</b>
<b>54.00 in (137.16 cm)</b>	<b>2.75 in (6.98 cm)</b>	<b>2.75 in (6.98 cm)</b>	<b>71% Viscose, 19% Polyester, 10% Cotton</b>
<b>BACKING</b>	<b>FIRE CODES</b>	<b>DOUBLE RUBS</b>	<b>PRODUCT NUMBER</b>
	<b>UFAC Class I / NFPA 260</b>	<b>Exceeds 39,000 Double Rubs (Wyzenbeek Method)</b>	<b>1339201</b>
<b>DATE BOOKED</b>	<b>COUNTRY</b>	<b>CLEANING CODES</b>	
<b>05/2023</b>	<b>Turkey</b>	<b>S</b>	

**ADDITIONAL PRODUCT NOTES**  
 Passes 20,000 Martindale Tst, Ca Tb 117-2013, Exclusive Pattern